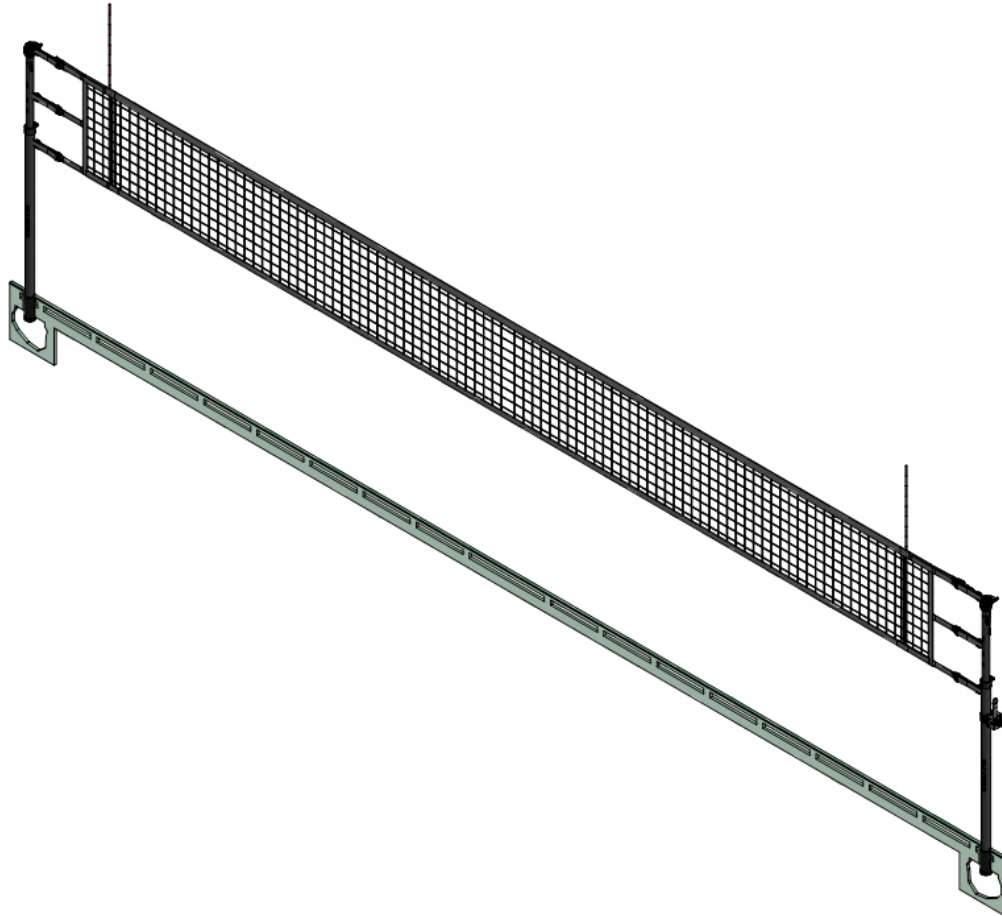




Model: 5300 series
Carbon Fiber Telescopic Volleyball System



Installation, Operation, and Maintenance Instructions

.....
Please read all instructions before attempting installation or operation of these units
.....

SAVE THESE INSTRUCTIONS FOR FUTURE USE



Table of Contents

| <u>Section</u> | <u>Page No.</u> |
|----------------------------------------|------------------------|
| Introduction | 2 |
| Parts List by Sub-Assembly | 2-3 |
| Specifications | 4-5 |
| Floor Sleeve Installation | 6-7 |
| Floor Cover Installation | 8 |
| Post and Net Installation Instructions | 9-11 |
| Maintenance Check Sheet | 12 |



5300 Carbon Fiber Telescopic Volleyball System



Introduction

Thank you for your purchase of a model 5300 Carbon Fiber Telescopic Volleyball System. To ensure that our equipment will provide years of use to you, we are including this installation, operation, and maintenance guide. This guide will provide information on the proper assembly and installation methods, operating procedures, and preventative maintenance of your portable backstop.

Please note that a Bill of Materials is being included with this guide. Please check that all of the parts called out on the Bill of Materials are present prior to beginning assembly and setup. Please do not substitute for factory parts. Please contact the PSS or Gared Sports customer service department and allow them to determine if substitute parts are acceptable.

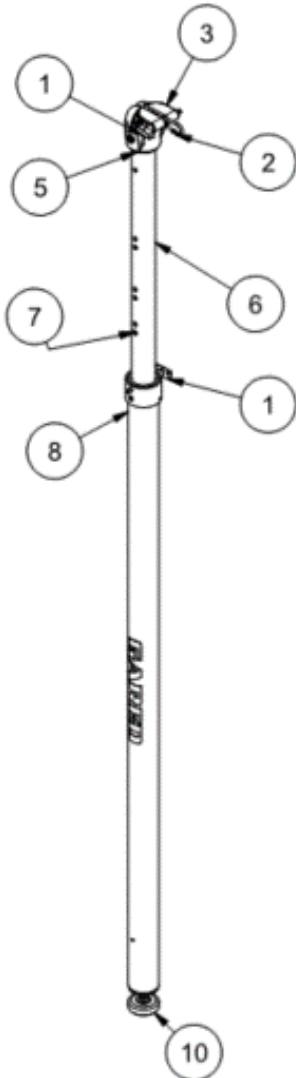
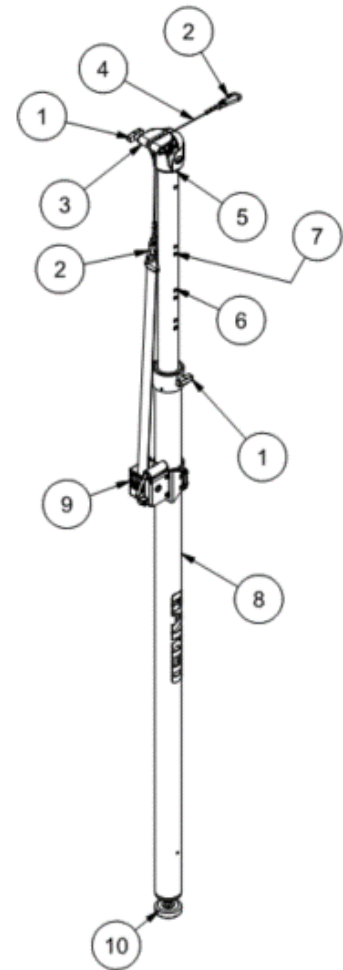
It is recommended that an individual who has been properly trained perform assembly and set up of the backstop. No one under the age of 18 should attempt assembly or set up of the unit, unless properly supervised.

To prevent normal wear and tear from shortening the life of the unit, preventative maintenance inspections and repairs should be performed at least once per year. If the units are subject to high or unusual usage, inspections should be scheduled to occur more frequently. If items are found to be nonconforming, replacements can be ordered from one of our authorized dealers. When contacting your dealer, please have information regarding the name of the project and any applicable warranty information.

| 5300 SERIES PARTS LIST | | | MODEL | | | | | |
|------------------------|-------------|------------------------------------|-------|------|------|------|------|------|
| ITEM | PART NUMBER | DESCRIPTION | 5300 | 5305 | 5302 | 5303 | 5383 | 5385 |
| | | | 1 CT | 1 CT | 2 CT | 2 CT | 3 CT | 3 CT |
| 1 | 5306 | WINCH POST, 5306 | 1 | 1 | 2 | 2 | 3 | 3 |
| 2 | 5307 | END POST, 5307 | 1 | 1 | 1 | 1 | 1 | 1 |
| 3 | 6404 | FLOOR SLEEVE, 3.5" INSIDE DIA. | 2 | - | 3 | - | 4 | - |
| 4 | 6430 | 6" BRASS FLOOR COVER - LOW PROFILE | 2 | - | 3 | - | 4 | - |
| 5 | 6010 | UPRIGHT PAD - CUSTOM COLOR | 2 | 2 | 3 | 3 | 4 | 4 |
| 6 | 601652115 | COLLEGIATE VOLLEYBALL NET | 1 | 1 | 2 | 2 | 3 | 3 |
| 7 | 1028-22-00 | NET ANTENNA | 2 | 2 | 4 | 4 | 6 | 6 |
| 8 | 7607-22-00 | NET SIDELINE MARKER | 2 | 2 | 4 | 4 | 6 | 6 |
| 9 | 6251 | BUCKLE COVERS SET OF (6) | 1 | 1 | 2 | 2 | 3 | 3 |
| 10 | 7608 | NET HEIGHT CHECKER | 1 | 1 | 1 | 1 | 1 | 1 |
| 11 | 1282-30-00 | 5/16" UNIVERSAL SNAP LINK | 3 | 3 | 5 | 5 | 7 | 7 |
| 12 | 601751819 | MANUAL, 5300 VOLLEYBALL SYSTEM | 1 | 1 | 1 | 1 | 1 | 1 |
| 13 | 601651380 | CABLE, 24" | 1 | 1 | 2 | 2 | 3 | 3 |

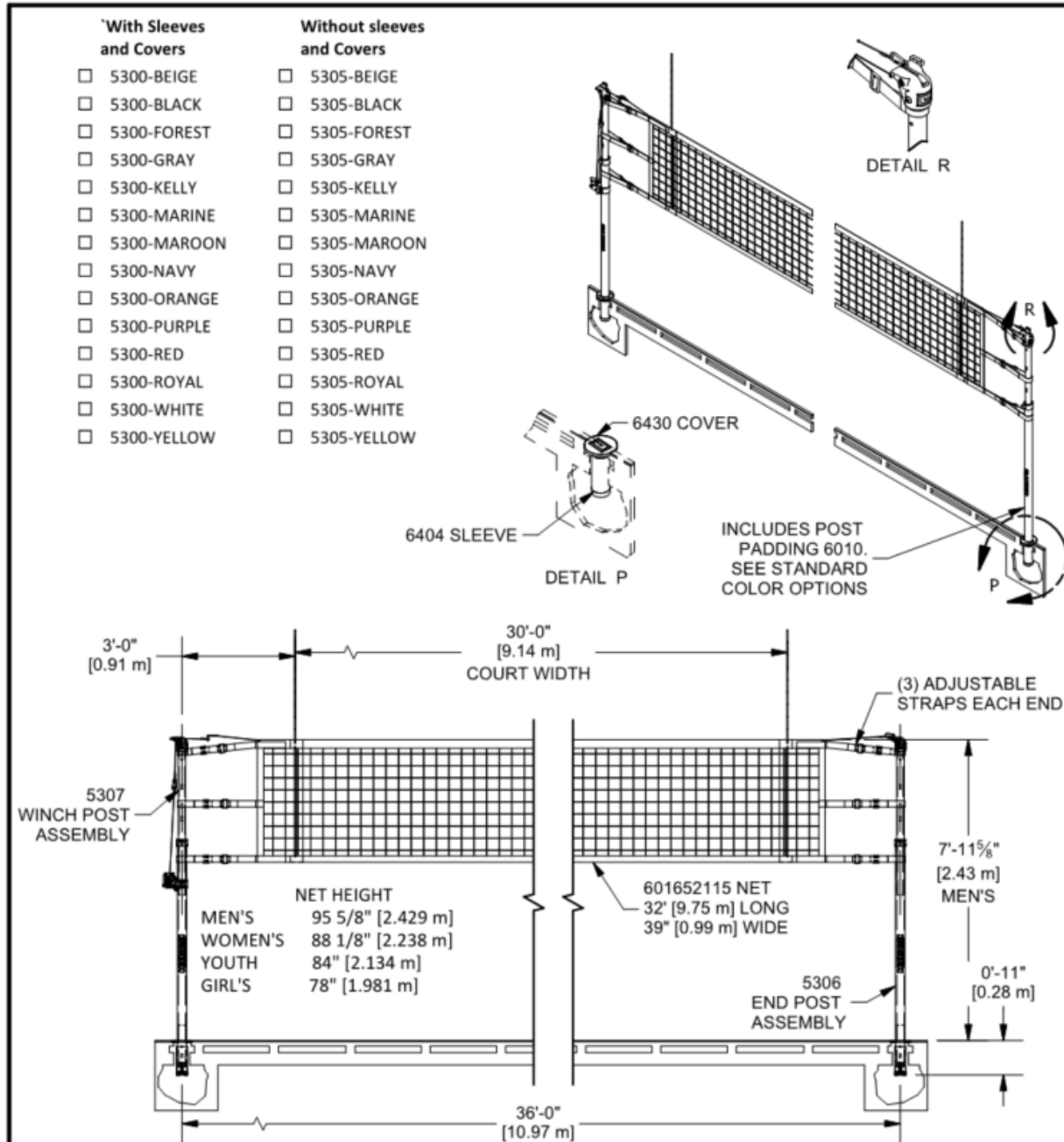
Posts are shipped fully assembled. Verify all parts listed on packing list are present prior to installation.

| 5306 Winch Post | | | |
|-----------------|-----|-------------|----------------------------|
| ITEM | QTY | PART NUMBER | DESCRIPTION |
| 1 | 1 | 101651239 | QUICK RELEASE PIN W HANDLE |
| 2 | 2 | 1280-30-00 | 1/4" UNIVERSAL SNAP LINK |
| 3 | 1 | 601651805 | VOLLEYBALL TOP, CABLE |
| 4 | 1 | 601651380 | CABLE, 24" |
| 5 | 1 | 604721812 | 5300 SPACER, TOP |
| 6 | 1 | 604721616 | POST, INNER CARBON FIBER |
| 7 | 2 | 124721591 | DECAL, HEIGHT, VINYL |
| 8 | 1 | 604721632 | LOWER WINCH POST ASSY |
| 9 | 1 | 604506673 | WORM GEAR WINCH KIT |
| 10 | 1 | 604721806 | ADJUSTING PAD ASSEMBLY, 3" |



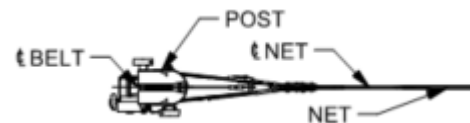
| 5307 End Post | | | |
|---------------|-----|-------------|----------------------------|
| ITEM | QTY | PART NUMBER | DESCRIPTION |
| 1 | 1 | 101651239 | QUICK RELEASE PIN W HANDLE |
| 2 | 1 | 1280-30-00 | 1/4" UNIVERSAL SNAP LINK |
| 3 | 1 | 601651805 | VOLLEYBALL TOP, CABLE |
| 4 | 0 | 601651380 | CABLE, 24" |
| 5 | 1 | 604721812 | 5300 SPACER, TOP |
| 6 | 1 | 604721616 | POST, INNER CARBON FIBER |
| 7 | 2 | 124721591 | DECAL, HEIGHT, VINYL |
| 8 | 1 | 604721814 | LOWER POST ASSY, VB |
| 9 | 0 | 604506673 | WORM GEAR WINCH KIT |
| 10 | 1 | 604721806 | ADJUSTING PAD ASSEMBLY, 3" |

MODEL 5300 CARBON FIBER TELESCOPIC VB SYSTEM
 MODEL 5305 CARBON FIBER TELESCOPIC VB SYSTEM less SLEEVES AND COVERS

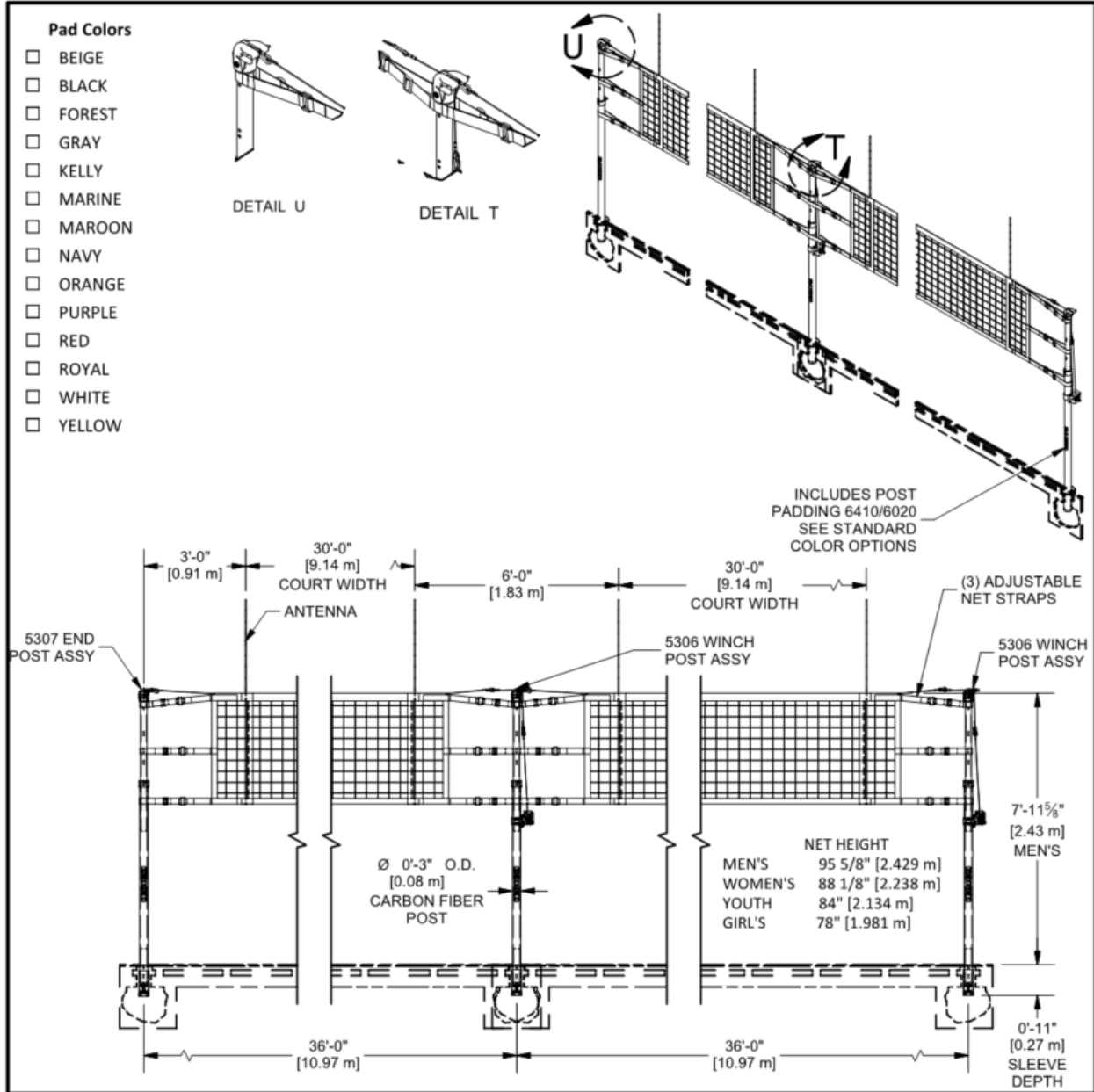


⚠ CAUTION

When setting up the system, always make sure the winch post is rotated so the belt is aligned with the net as the net begins to tension. Failure to do so will cause excessive belt wear.

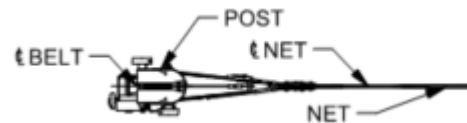


MODEL 5302 CARBON FIBER TELESCOPIC TWO COURT VB SYS
 MODEL 5303 CARBON FIBER TELESCOPIC TWO COURT VB SYS less SLEEVES AND COVERS



⚠ CAUTION

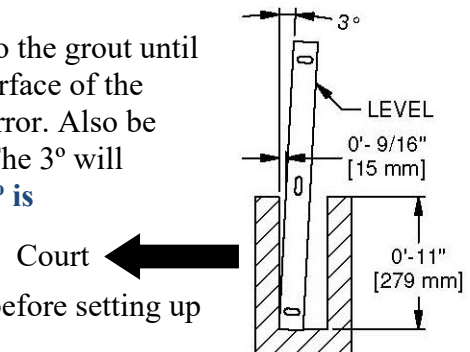
When setting up the system, always make sure the winch post is rotated so the belt is aligned with the net as the net begins to tension. Failure to do so will cause excessive belt wear.



Floor Sleeve Installation

1. Mark (2) points on the floor exactly 36 feet apart (refer to most recent set of architectural prints for exact locations within the gym). These represent the CENTERS of each sleeve installation. If sleeves are to be more or less than 36 feet apart, contact a PSS or Gared representative for information regarding this alteration.
2. Cut (2) round holes through the playing surface 4-3/4" to 5" diameter centered on the spots marked in step one. (See page 7)
3. After cutting out the circle in the surface flooring, cut a similar hole in the concrete slab below. The diameter of this hole should be about 5"; however the size is not critical. The hole must be large enough to accommodate the sleeve at 3 degrees off vertical.
4. Cut or drill the hole completely through the concrete slab. Under the slab, hollow out (by hand) an area about 16-20" deep from the playing surface. (Refer to page 5 and 7)
5. A "non-shrink" grout should be used to anchor the sleeve. Pour the grout mixture into the hole until it is just below the BOTTOM of the concrete hole. Cover the sleeve during installation to prevent debris from falling in or grout from entering the bottom of sleeve.

6. Insert the 3-1/2" O.D. steel sleeve and work it down into the grout until the inside bottom of the sleeve is 11" below the TOP surface of the floor. Incorrect sleeve depth will result in a net height error. Also be aware that the sleeve must tilt 3° away from the court. The 3° will correct when the net is installed and tightened. **Note: 3° is approximately 9/16" in 11".**



7. Wait a minimum of (7) days to allow the grout to cure before setting up the posts.

8. **Note: A skilled woodworker will be needed for the following operation!**

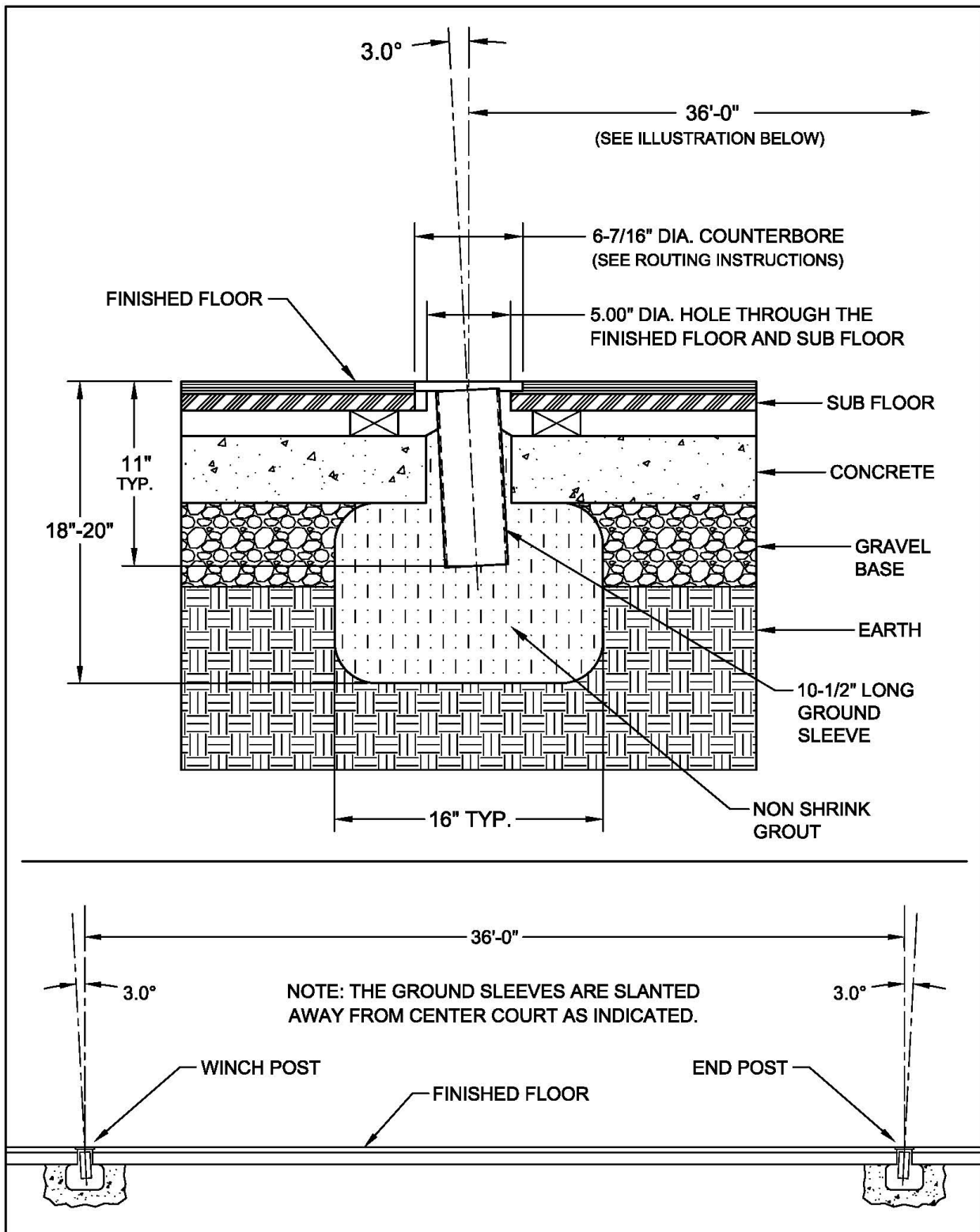
Using a router and template, make a counterbore 6-7/16" diameter by 9/16" deep centered over the original 5" hole in the floor, to receive the brass floor cover. A template can be made from a piece of Masonite or thick plastic. A template is needed to achieve a good and accurate cut. Many router and template combinations are possible. One example of a router and template combination is shown on page 6. A finished counterbore of 6-7/16" diameter is what is important! Practice on a piece of scrap wood first. If the hole is too big, corrections may not be possible!

⚠ CAUTION

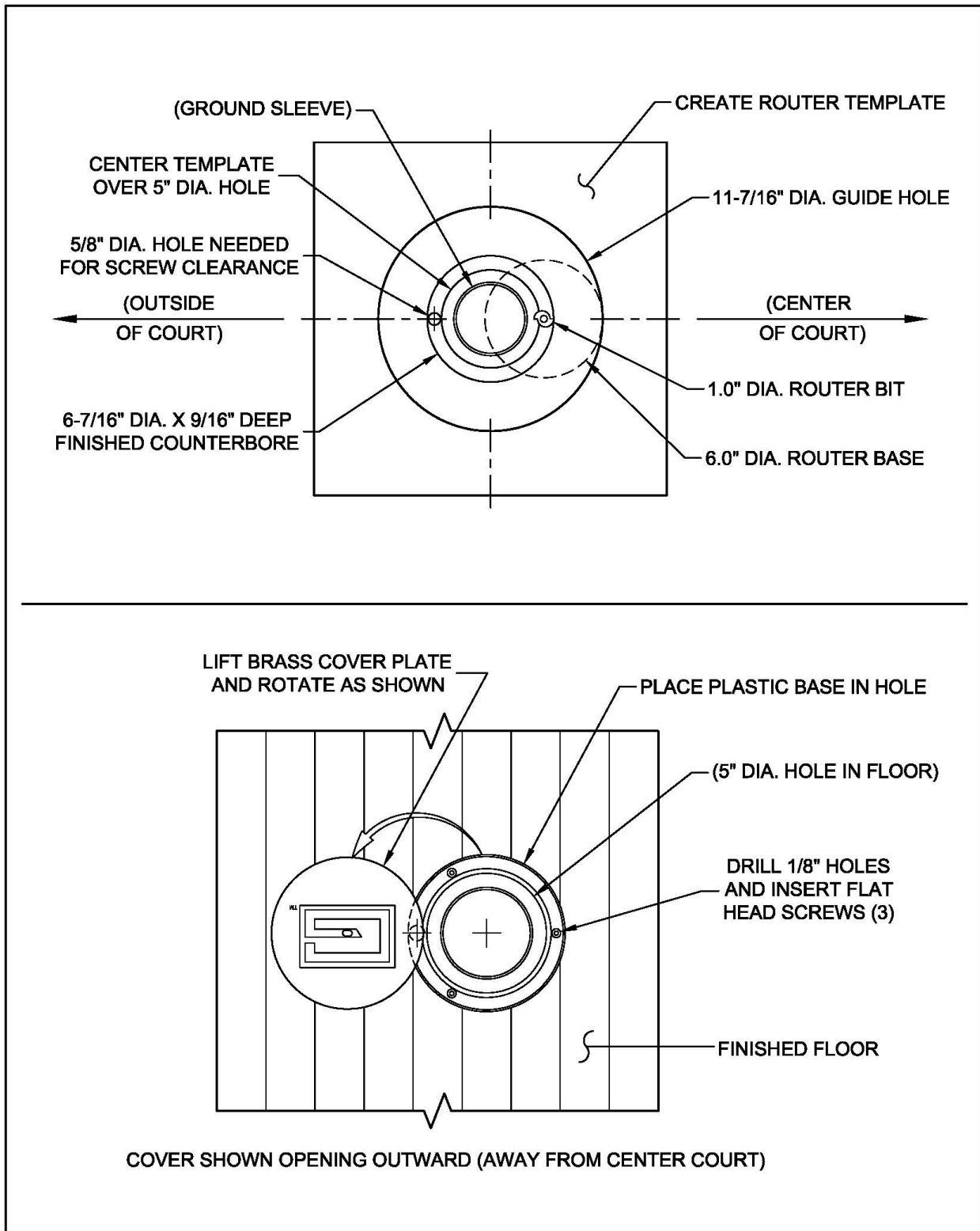
The dimensions given are for a 6130/6131 floor cover. Carefully confirm exact floor cover diameter and depth before starting.

9. Install the floor covers. Usually the covers are oriented to open outward away from the playing area. However, this is a matter of preference. Drill holes and insert screws as shown on page 8.

Installation Instructions for Ground Sleeves

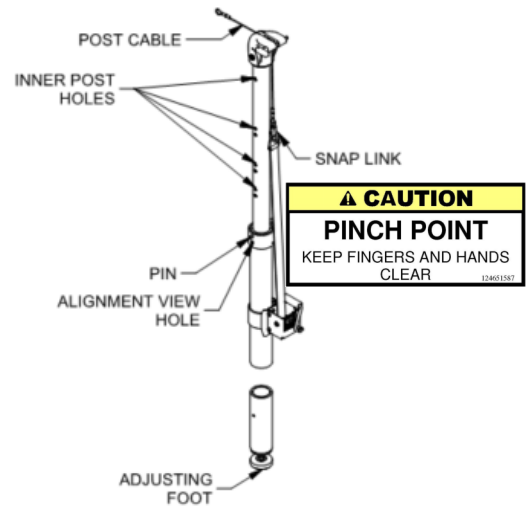


Counterbore Details and Floor Cover Installation



Post and Net Installation Instructions

1. Lift and rotate the floor covers out of the way. Insert the **Winch Post** and **End Post**.
2. Lay out the net in the approximate position between the two posts.
3. To adjust the net height, pull out the pin and slide the inner post up or down until the desired net height indicator can be seen through the alignment view hole. See regulation net heights below. Indicators are as follows: “M” for men’s height, “W” for women’s, “J” for junior’s, and “G” for girl’s height. When the proper indicator is showing in the lower hole, insert the pin in upper hole until it passes through entire outer tube.



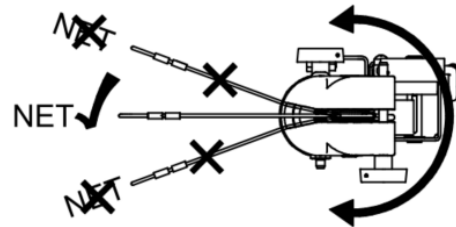
Net Height at Center Court

| | | |
|------------|---------|-----------|
| MEN'S VB | 95 5/8" | [2.429 m] |
| WOMEN'S VB | 88 1/8" | [2.238 m] |
| YOUTH VB | 84" | [2.134 m] |
| GIRL'S VB | 78" | [1.981 m] |

*Fine adjustments are made by adjusting the rubber foot on the bottom of the post. Post cable height should be approx 3/4" to 1" higher than center court requirements at setup. **Set this height now, as***

adjustment later will require the net to be removed.

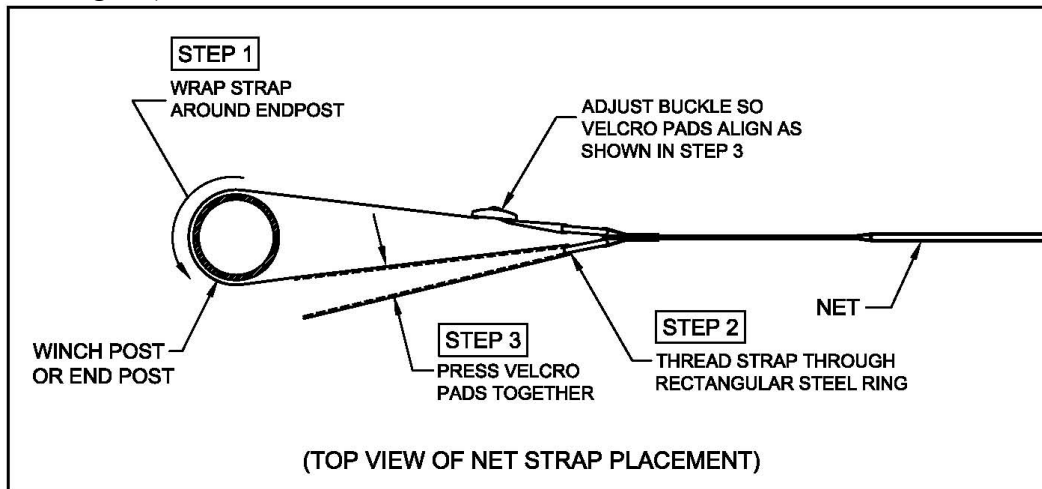
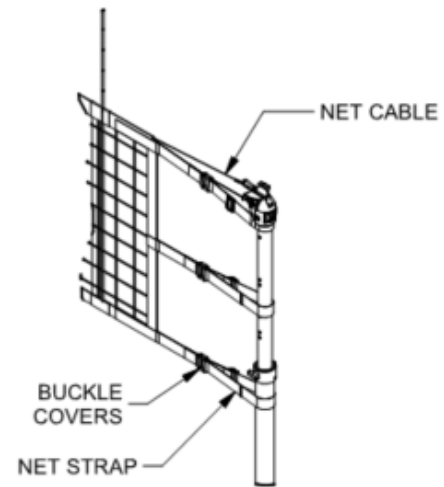
4. Secure Post Cable over pulley on volleyball post top.
5. Rotate the crank handle of the winch and attach to D ring on winch strap with snap link.
6. Attach the Net Cable to the top bracket of the end post with a snap link. Attach the net cable to the Post Cable with a snap link.
7. Next, turn the winch handle to tighten the net cable. Note that the height of the net is measured at the center of the court and will be approximately 3/4" higher at the court lines when properly tensioned. **Be sure the winch post is rotated so the Net Cable is aligned with the net as the net begins to tension. Failure to do so will cause excessive wear.**



- **DO NOT OVER TENSION THE NET.**
- **Tension the winch only tight enough to raise center point of net to appropriate height, as noted by above chart.**
- **Additional tension beyond the tension required to reach designated center net height will damage equipment, it will not affect the net play or tightness of net.**



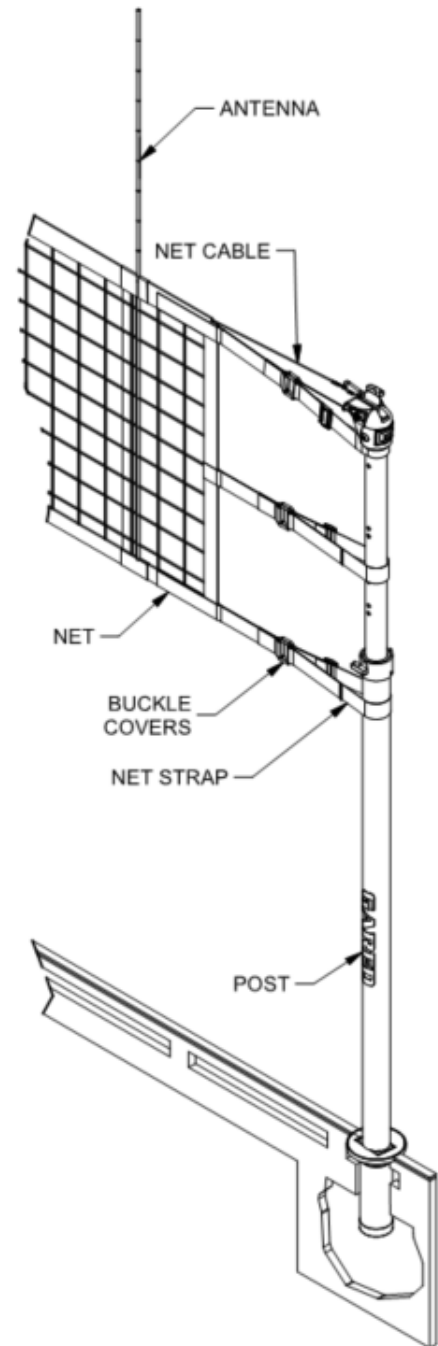
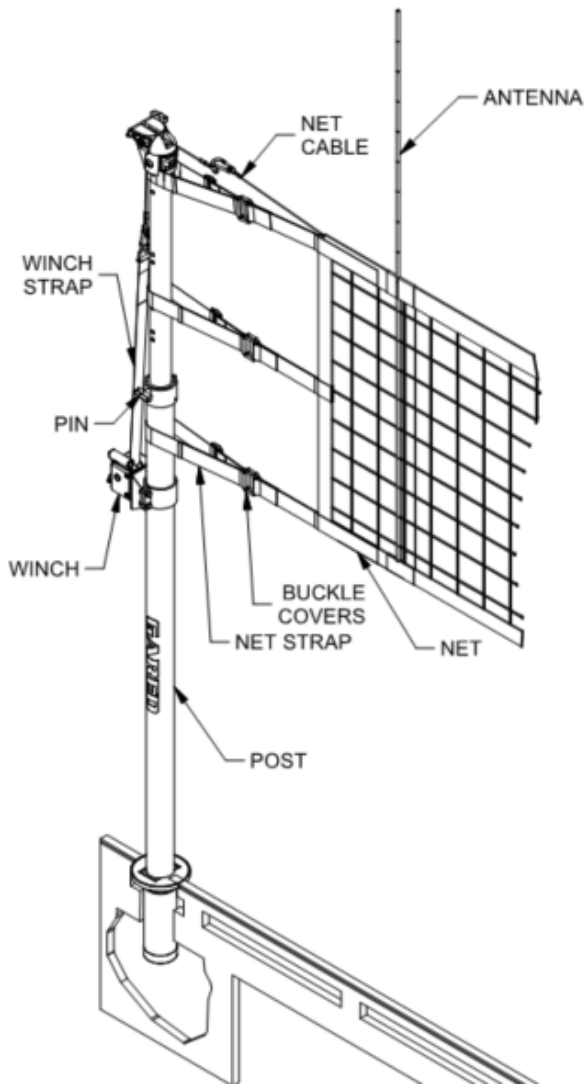
8. Once the net height is adjusted with the winch, center the net on the winch top cable so that there is equal space between the ends of the net and the posts. Wrap the net straps around the posts as shown in the illustration to the right and below. Pull the straps tight and press the Velcro surfaces together. **These straps are responsible for maintaining the net tension** and may need to be retightened periodically. Expect some initial stretch in the net.
9. Minor height adjustments can be made by screwing the foot pads on the bottom of the posts in or out. (Posts must be removed from the floor sleeves to make adjustments, so it is best to measure before attaching net)



10. Install the net side markers, 7607-22-00, which will attach the net antenna to the net over each side court line.
11. Insert the net antenna. Antenna should be adjusted to mark the outer edge of the 30 ft [9.144 m] court width.
12. Install the buckle covers over each net strap buckle.
13. Install post pads by wrapping pad around the post with the straps towards the court side of post. Secure with the hook and loop straps sewn to the post padding.
14. To take volleyball system down;
 - a. Remove antenna.
 - b. Unhook net straps from posts at both ends.
 - c. Crank winch until net cable can be unhooked from snap links.
 - d. Fold net up and transport net and posts to storage.

5306 Winch Post with Net

5307 End Post with Net



ATTENTION CONSUMER

Any athletic activity involves a certain risk of physical injury. This equipment has been designed for safety; however, care and supervision are required during the setting up and taking down of this equipment, as well as during play. The entire system should be periodically inspected for components needing replacement or tightening.



Maintenance

1. General inspection of equipment when used should be performed to ensure no catastrophic failures have occurred during the course of use between yearly inspections.
2. It is recommended that yearly inspections be conducted to determine if any bolts or any other hardware has become worn or loosened. A sample check sheet has been provided for you in this guide.
3. During yearly inspections, all moving parts should be inspected while in operation. Key points to look for include rotation points where bushings contact metal, winches, pulleys and quick links. The strap should be looked at for any degradation or fraying.
4. Any loose bolts or nuts should be tightened.
5. Check Sliding components and strap for wear.

Maintenance Check Sheet

Date: _____

Unit: _____.

Anchors/Floor Sleeves

- | | | | |
|-----------------------|-----------------------------|---------------------------------|----------------------------------|
| -Anchors/bolts | OK <input type="checkbox"/> | Repair <input type="checkbox"/> | Replace <input type="checkbox"/> |
| -Floor sleeves/covers | OK <input type="checkbox"/> | Repair <input type="checkbox"/> | Replace <input type="checkbox"/> |

Unit Supports / Brackets / Hinges

- | | | | |
|--------------------------------------------|-----------------------------|---------------------------------|----------------------------------|
| -Tubes; dents, stress spots, etc. | OK <input type="checkbox"/> | Repair <input type="checkbox"/> | Replace <input type="checkbox"/> |
| -Bolts; loose, deformed, etc. | OK <input type="checkbox"/> | Repair <input type="checkbox"/> | Replace <input type="checkbox"/> |
| -Brackets/Hinges; bent, not rotating, etc. | OK <input type="checkbox"/> | Repair <input type="checkbox"/> | Replace <input type="checkbox"/> |

Winch/Strap

- | | | | |
|------------------------------|-----------------------------|---------------------------------|----------------------------------|
| -Winch; binding, loose, etc. | OK <input type="checkbox"/> | Repair <input type="checkbox"/> | Replace <input type="checkbox"/> |
| -Hardware; Quick links | OK <input type="checkbox"/> | Repair <input type="checkbox"/> | Replace <input type="checkbox"/> |

Sliding Components

- | | | | |
|---------------------|-----------------------------|---------------------------------|----------------------------------|
| -Locking Mechanisms | OK <input type="checkbox"/> | Repair <input type="checkbox"/> | Replace <input type="checkbox"/> |
|---------------------|-----------------------------|---------------------------------|----------------------------------|

Safety Padding

- | | | | |
|------------------|-----------------------------|---------------------------------|----------------------------------|
| -Velcro Function | OK <input type="checkbox"/> | Repair <input type="checkbox"/> | Replace <input type="checkbox"/> |
| -Vinyl Condition | OK <input type="checkbox"/> | Repair <input type="checkbox"/> | Replace <input type="checkbox"/> |

Replacement parts and / or service to the equipment can be obtained from your local dealer or installer. To find your local dealer, visit us online or contact customer service department at the web address or phone number listed on the last page of this manual.



Gared Holdings, LLC

Performance Sports Systems
9200 E. 146th Street
Noblesville, IN 46060

800-848-8034
www.perfsports.com

Gared Sports
9200 E. 146th Street
Noblesville, IN 46060

800-325-2682
www.garedsports.com