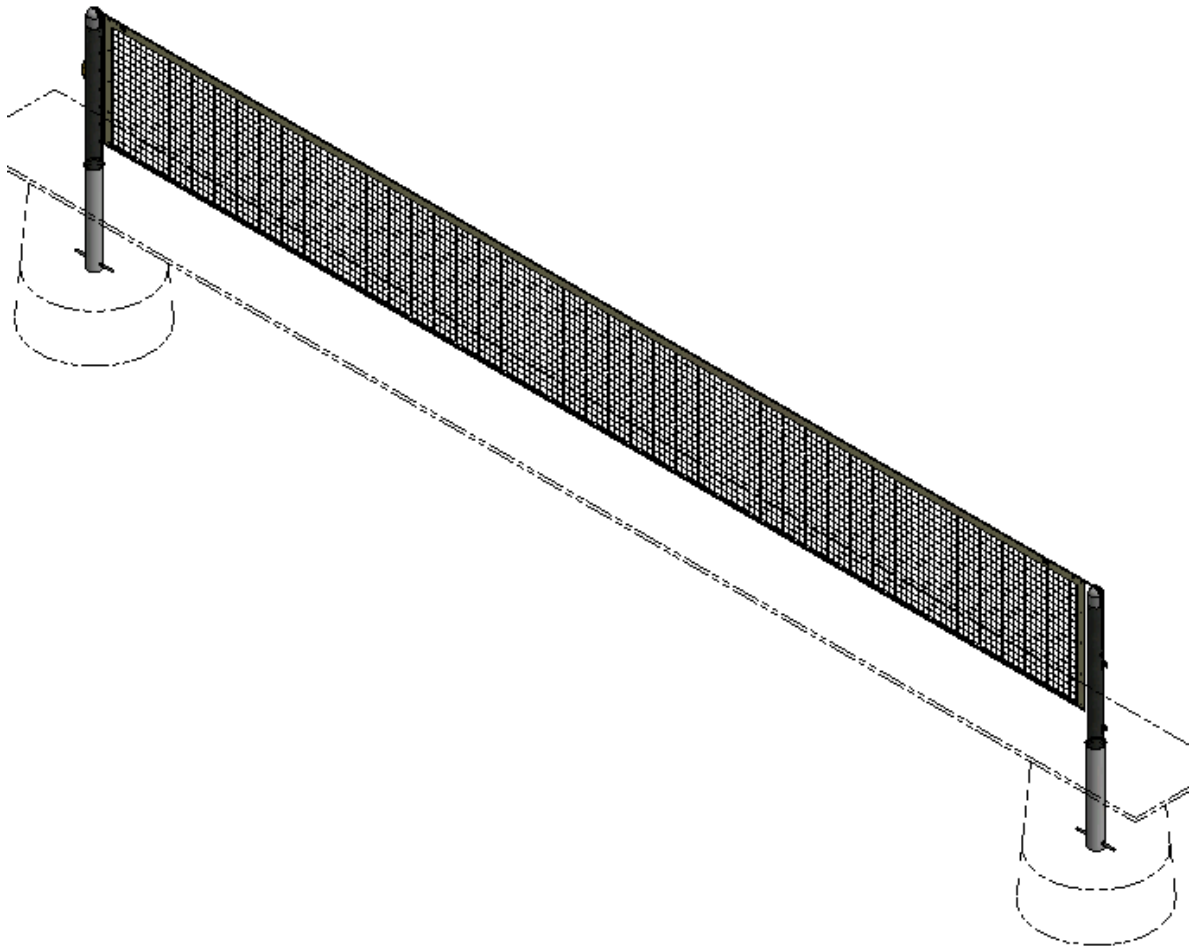




Pickleball System, 3" Inground

Model: PKLBIG



Installation, Operation and Maintenance Instructions

Please read all instructions before attempting installation or operation of these units

SAVE THESE INSTRUCTIONS FOR FUTURE USE



Table of Contents

<u>Section</u>	<u>Page No.</u>
Introduction	1
Specifications	2
Assembly and Setup	3
Unit Operation	5
Maintenance	6

Introduction

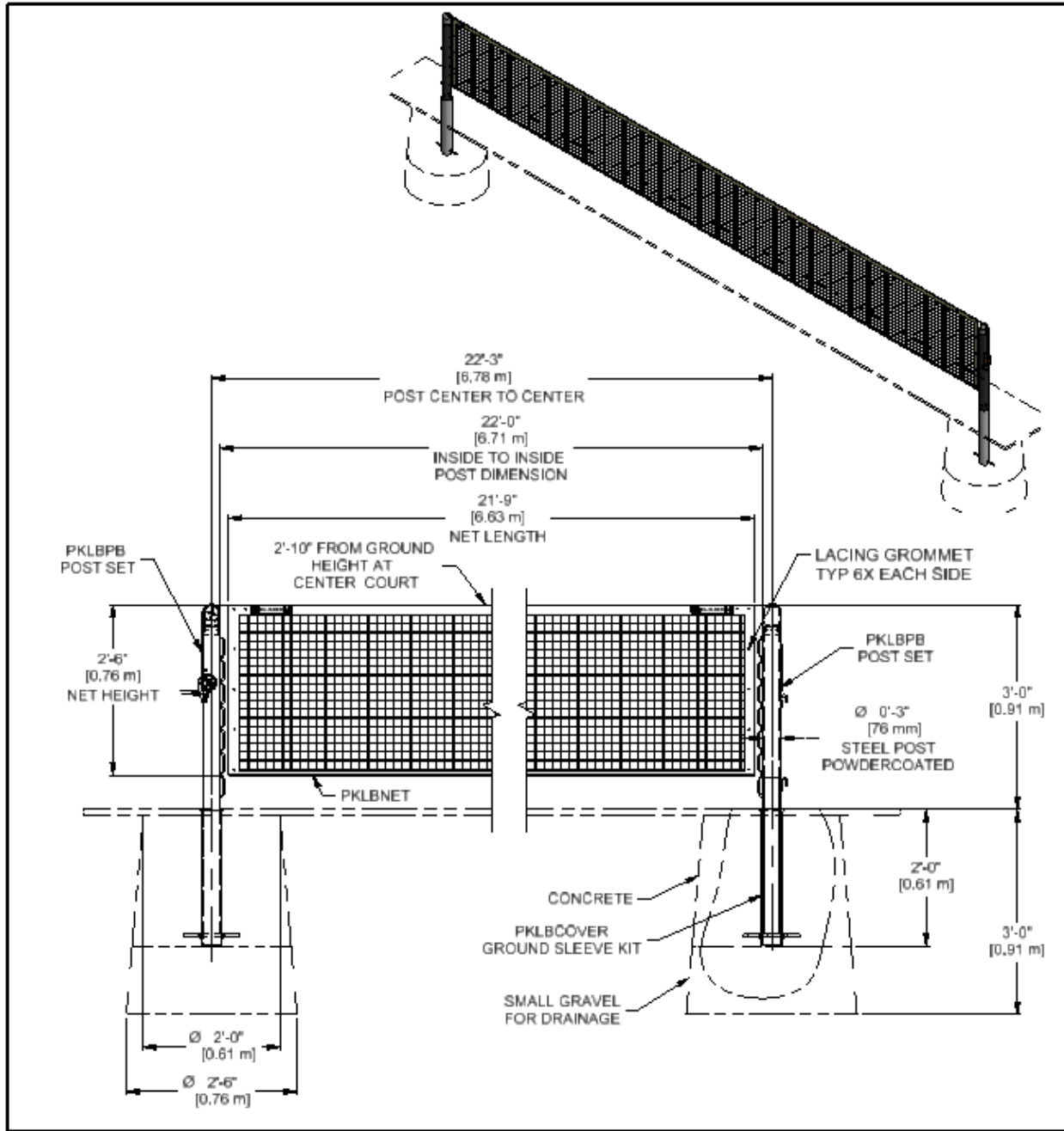
Thank you for your purchase of a model PKLBIG. To ensure that our equipment will provide years of use to you, we are including this installation, operation, and maintenance guide. This guide will provide information on the proper assembly and installation methods, operating procedures, and preventative maintenance of your pickleball system.

Please do not substitute for factory parts. Contact the Gared or PSS customer service department and allow them to determine if substitute parts are acceptable.

It is recommended that an individual who has been properly trained perform assembly and set up pickleball system. No one under the age of 18 should attempt assembly or set up of the unit, unless properly supervised.

To prevent normal wear and tear from shortening the life of the unit, preventative maintenance inspections and repairs should be performed at least once per year. If the units are subject to high or unusual usage, inspections should be scheduled to occur more frequently. If items are found to be nonconforming, replacements can be ordered from Gared, PSS or one of our authorized dealers. When contacting Gared or PSS, please have information regarding the dealer/installer who sold the unit, the name of the project, and any applicable warranty information.

SPECIFICATIONS



PARTS LIST			
ITEM	QTY	PART NUMBER	DESCRIPTION
1	1	PKLBNET	NET, PICKLEBALL, 21'9" X 2'6"
2	1	936052134	ASSEMBLY, PICKLEBALL POST, END, PAINTED
3	1	936052110	ASSEMBLY, PICKLEBALL POST, WITH WINCH
4	2	931652136	ASSEMBLY, GROUND SLEEVE FOR 3 INCH TUBE
5	2	676175624	CAP WELDMENT, GROUND SLEEVE 3" TUBE



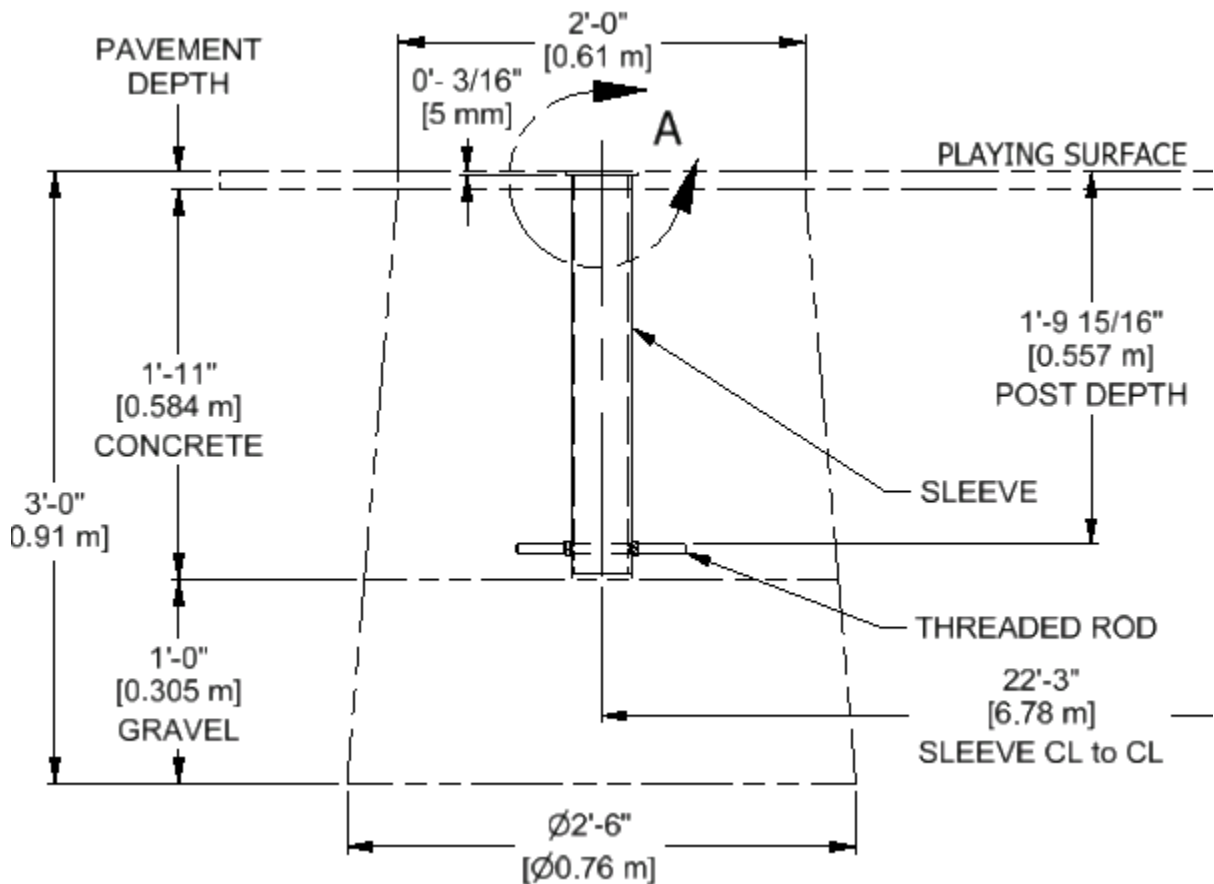
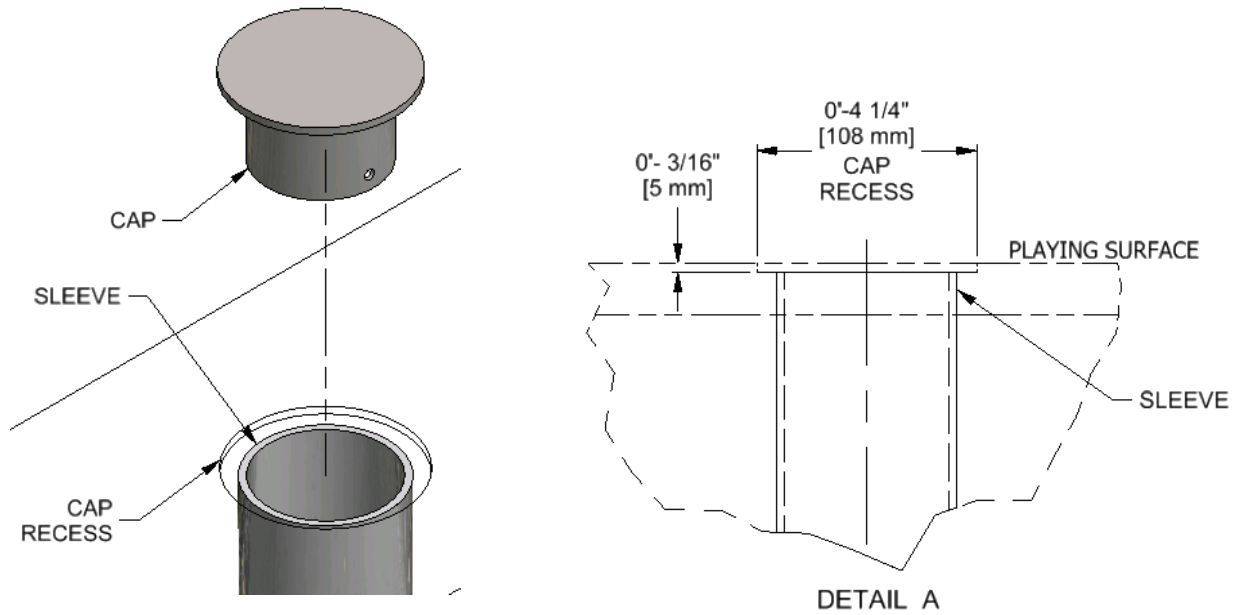
PKLBIG Pickleball System, Inground



INSTALLATION

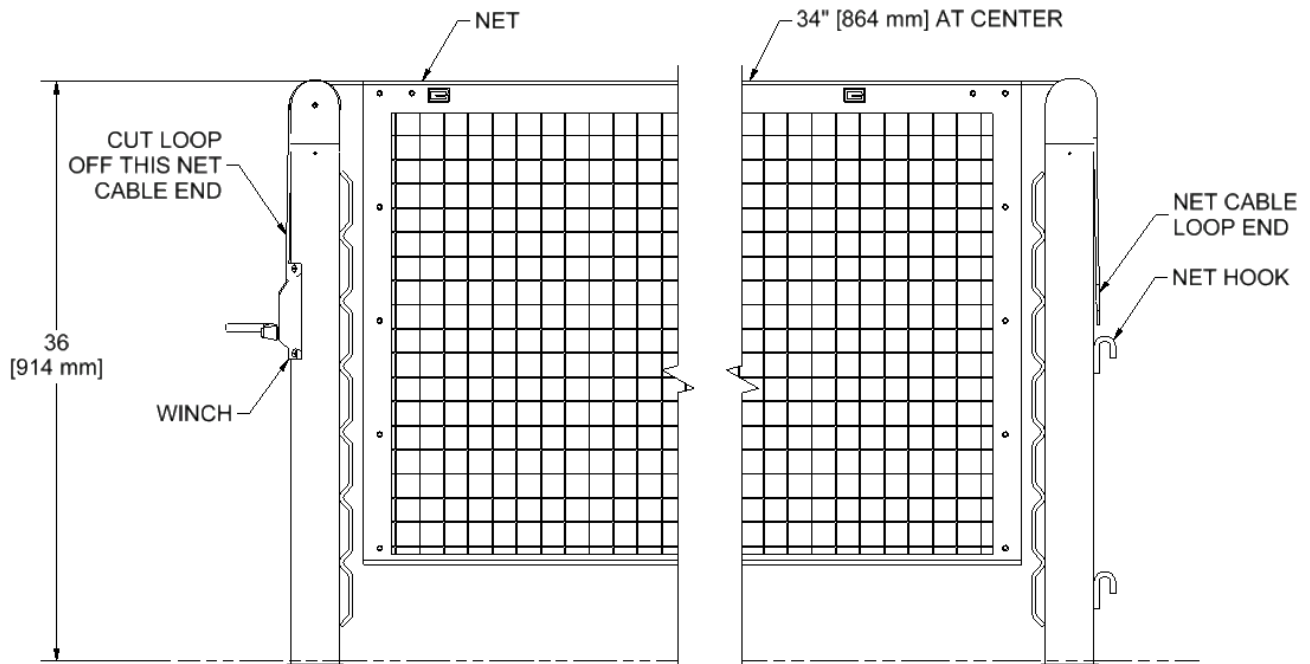
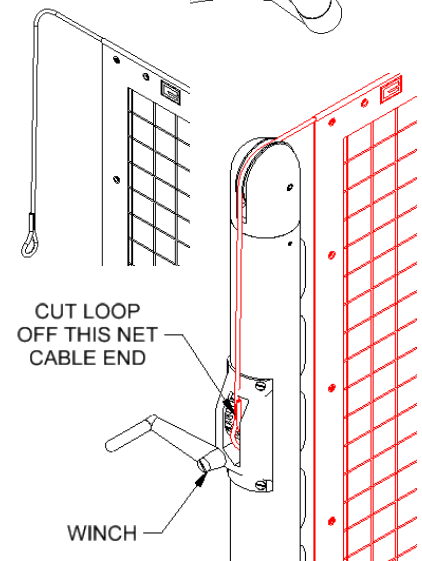
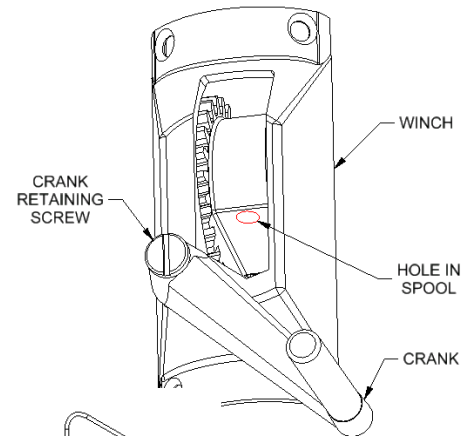
SLEEVE INSTALLATION

1. The post sleeves must be set in a concrete foundation. The size of the foundation may need to vary with local codes.
2. Post sleeves must be spaced 22'-3" from sleeve center to center.
3. Dig a bell-shaped hole approximately 2'-0" at the top and 2'-6" at the bottom.
4. Fill the bottom of the hole with approximately 1 ft of gravel to allow for drainage.
5. Prepare sleeve by installing ½-13 Threaded Rod through a hole in sleeve tube. Secure with two ½" Hex Nuts installed finger tight.
6. Set the sleeve on top of the gravel as shown and adjust sleeve depth until it is 3/16" below the finished playing surface. Be sure sleeve is at the correct 22'-3" center distance and is vertically plumb. Note: If sleeve does not set on the gravel, add a drain tube to drain the sleeve that reaches the gravel and tape the bottom of the sleeve to prevent concrete from entering.
7. Pour concrete around the sleeve to a height that allows for the finished pavement surfacing. Be sure sleeve has remained at the correct spacing and is plumb.
8. When installing the finished surface, a 3/16" x 4 ¼" recess should be formed around the sleeve to allow for the sleeve cap to be installed flush with the playing surface.
9. Allow concrete and playing surface as required to cure for a minimum before setting up the posts.

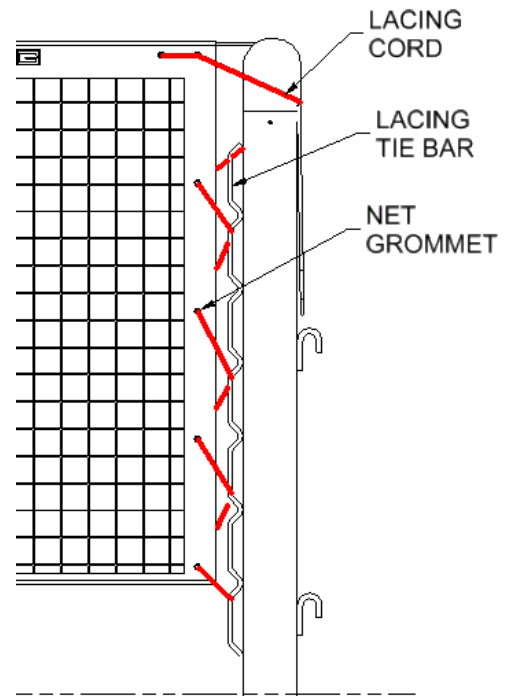


OPERATION

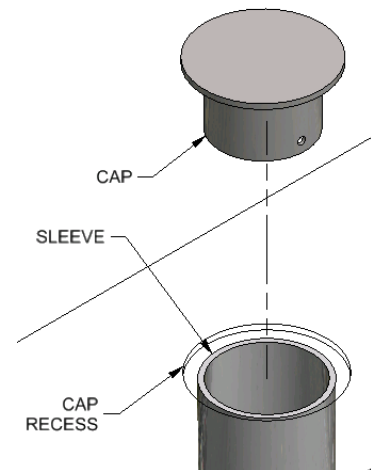
1. Now that the sleeves and sleeve caps are install and the concrete has cured, the system can be setup for playing pickleball.
 - a. Remove the sleeve caps and carefully place each post into the sleeves until they contact the 1/2" threaded rod in the sleeve. The top of the post should be approximately 36" above the playing surface.
 - b. Rotate each post until the net lacing bars are positioned towards the court side. See illustration below.
 - c. Assemble the crank onto the winch using the crank retaining screw.
 - d. Unfold the net between the two posts.
 - e. On the net hook post, hook the loop in the net cable onto the post with the cable passing over top of the post.
 - f. At the end with the winch, cut off the loop on the net and tape cut end so it does not fray.
 - g. Thread a 2 to 2-1/2 inches of the cut end of the cable into the hole in the spool and begin to crank the winch clockwise until the net cable is lightly tensioned.
 - h. Tension the net until the top of the net measures 34" [864 mm] at the center of the court.



- i. Install net lacing on each post, starting at the top of the net as shown.
- j. After adjusting net, crank can be removed to prevent tampering.



2. To take the system down;
 - a. Untie the net lacing.
 - b. Release net tension by cranking the winch counter clockwise.
 - c. Fold net up for storage.
 - d. Remove net posts and move to storage.
 - e. Be sure to cover sleeves with sleeve caps. The caps keep debris out of the hole and prevent a person from stepping into the open sleeve hole. The top of cap must fit flush with playing surface when court is used for other sports or other events.



Maintenance

Annually check over the pickleball system.

- Check for damaged parts. If damaged the manufacturer or dealer should be contacted for replacement parts.
- Check and repair scratched paint or rust.
- Replace worn or fraying net.



Gared Holdings, LLC

**Performance Sports Systems
9200 E. 146th Street
Noblesville, IN 46060**

**800-848-8034
www.perfsports.com**



**Gared Sports
9200 E. 146th Street
Noblesville, IN 46060**

**800-325-2682
www.garedsports.com**