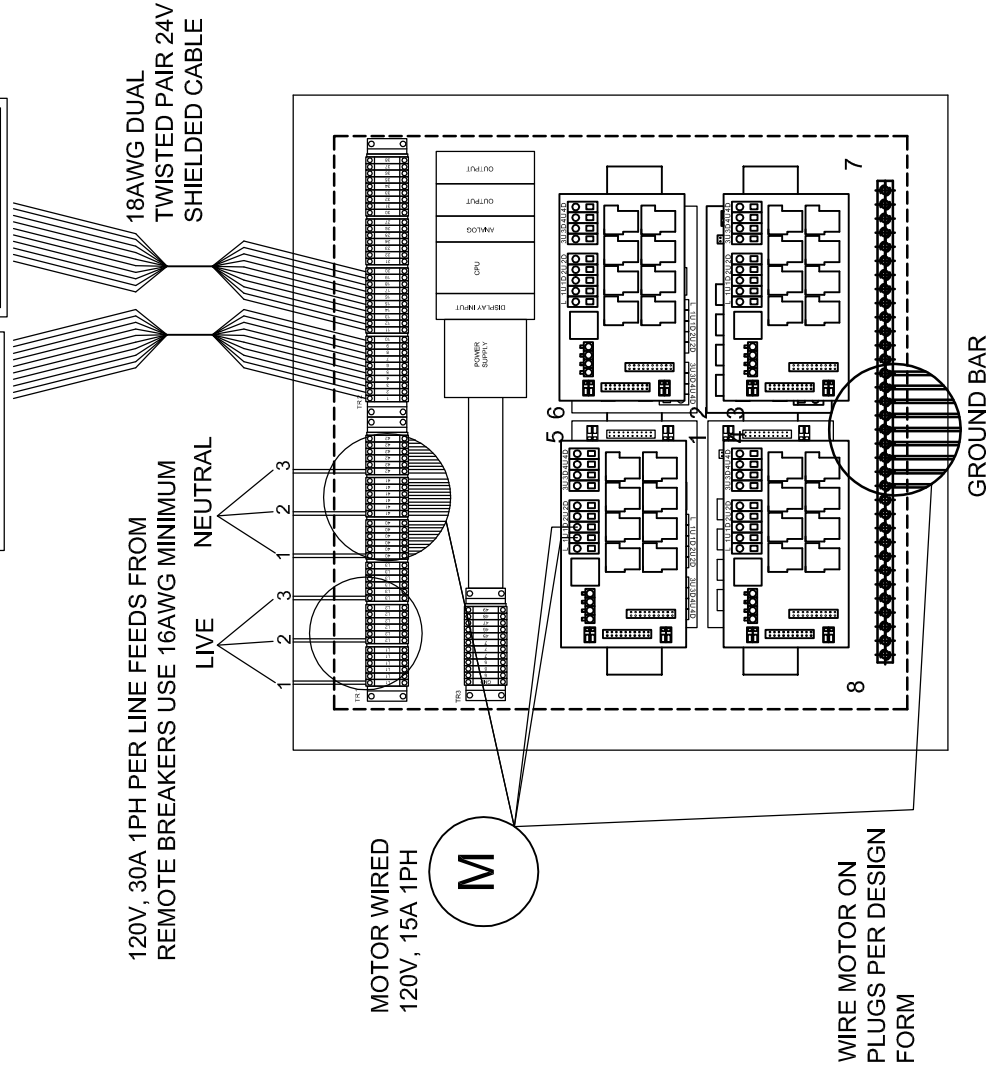


IMPORTANT: THE SHIELD OF THE COMMUNICATION WIRE BETWEEN THE RELAY BOX AND THE INTERFACE MUST BE GROUNDED

IMPORTANT: THE VOLTAGE PROVIDED MUST BE STABLE. IF UNSTABLE CAN CAUSE PROBLEMS WITH SYSTEM.

NOTE: INSTALL CONTROL INTERFACE IN A 12X12X6 JUNCTION BOX

TOUCH TERMINAL LABELED ONE THRU TEN



NOTE: LOCATE SCREEN ON WALL AT A CONVENIENT HEIGHT FOR AUTHORIZED USERS.

AUTHORIZED USER MUST HAVE FULL VIEW OF GYMNASIUM EQUIPMENT AT ALL TIMES WHEN OPERATING.

ALL OTHER ELECTRICAL, JUNCTIONS AND SYNCHRONIZER BOXES ARE TO BE INSTALLED BY A CERTIFIED ELECTRICAL CONTRACTOR. FOLLOW ALL LOCAL CODES AND MANUFACTURER'S INSTRUCTIONS.

NOTE: THIS DRAWING IS FOR REFERENCE ONLY. REFER TO THE TSC INSTALLATION WIRING INSTRUCTIONS INCLUDED IN THE SUBMITTAL PACKAGE FOR SPECIFIC WIRE TERMINATION INFORMATION.

REVISION		
REV.	DATE	BY
-	-	-

PSS
PERFORMANCE
SPORTS SYSTEMS

G
GARED

Gared Holdings, LLC
9200 E. 146th St. Noblesville, IN 46060

THIS DOCUMENT CONTAINS TRADE SECRET AND OTHER MATERIALS WHICH ARE PROTECTED BY CONFIDENTIALITY NOTICE AND AGREEMENT AND BY COPYRIGHT. ANY USE OR COPYING OF THIS DOCUMENT EXCEPT AS AUTHORIZED BY GARED HOLDINGS, LLC IS STRICTLY PROHIBITED.

TSC 2000 XL			
DRAWN	DWP	DATE	10/06/08
MATERIAL	N/A		
APPROVED	-	DATE	-
FINISH	N/A		
FILE LOC.	Q:\Final Release\Specifications		DWG. NO. TSC2000X
SIZE	SCALE	SHT. NO.	PART NO.
A	NOTED	1 OF 1	TSC2000XL
REV	A		



TSC2000XL TOTAL SYSTEM CONTROL KEYPAD

RECOMMENDED APPLICATION

The TSC2000XL Total System Control unit allows one touch operation of basketball backstops, divider curtains, lighting, scoreboards, P.A. systems or just about any other electrically controlled equipment through a wall-mounted touch screen.

SPECIFICATIONS

One touch screen and relay box will operate eight motorized systems and auxiliary operations (lighting, scoreboards, etc.). System uses 7.5" touch screen. Operates on 110 Volts with screen communications at 24 Volts DC and mounts in a standard twelve by twelve by six inch deep enclosure. Relay panel (24" x 24" x 6") can be mounted in any remote location. System will operate equipment individually and has custom program options for multiple equipment configurations such as "game day" or "practice" set-up. System has expandability for operating additional equipment by adding relay cards. System can operate up to 6 devices simultaneously.

Included

1. Emergency stop button at display location. Can be installed near screen.
2. Display window guard with key lock.
3. Manual Control override with 15' cord.

Optional at additional cost

1. Additional Touch Screen
2. Additional motors upgrading to 16, 24 or 32
3. Uninterruptible power supply
4. AAG Smart Move Technology

SAFETY FEATURES

Password controlled to prevent unauthorized use. "Press and hold" button feature prevents authorized operator from walking away while equipment is in motion. Auto shut-off after thirty seconds of non-use. Unit is self-diagnostic and has voltage-sensing shutdown feature in case of overload, and will recommend electrical maintenance if needed.

WARRANTY

The TSC2000XL Total Control System has a one-year warranty covering defects in material and workmanship.

All other electrical, junction and synchronizer boxes not mentioned above to be furnished and installed by a certified electrical contractor. Follow manufacturer's instructions and all local safety codes

Subject to design change and current manufacturing practices.
Revised May 4, 2011 ©2008 Gared Holdings, LLC.