

NOTE: LOCATE KEYPAD ON WALL AT A CONVENIENT HEIGHT FOR AUTHORIZED USERS.

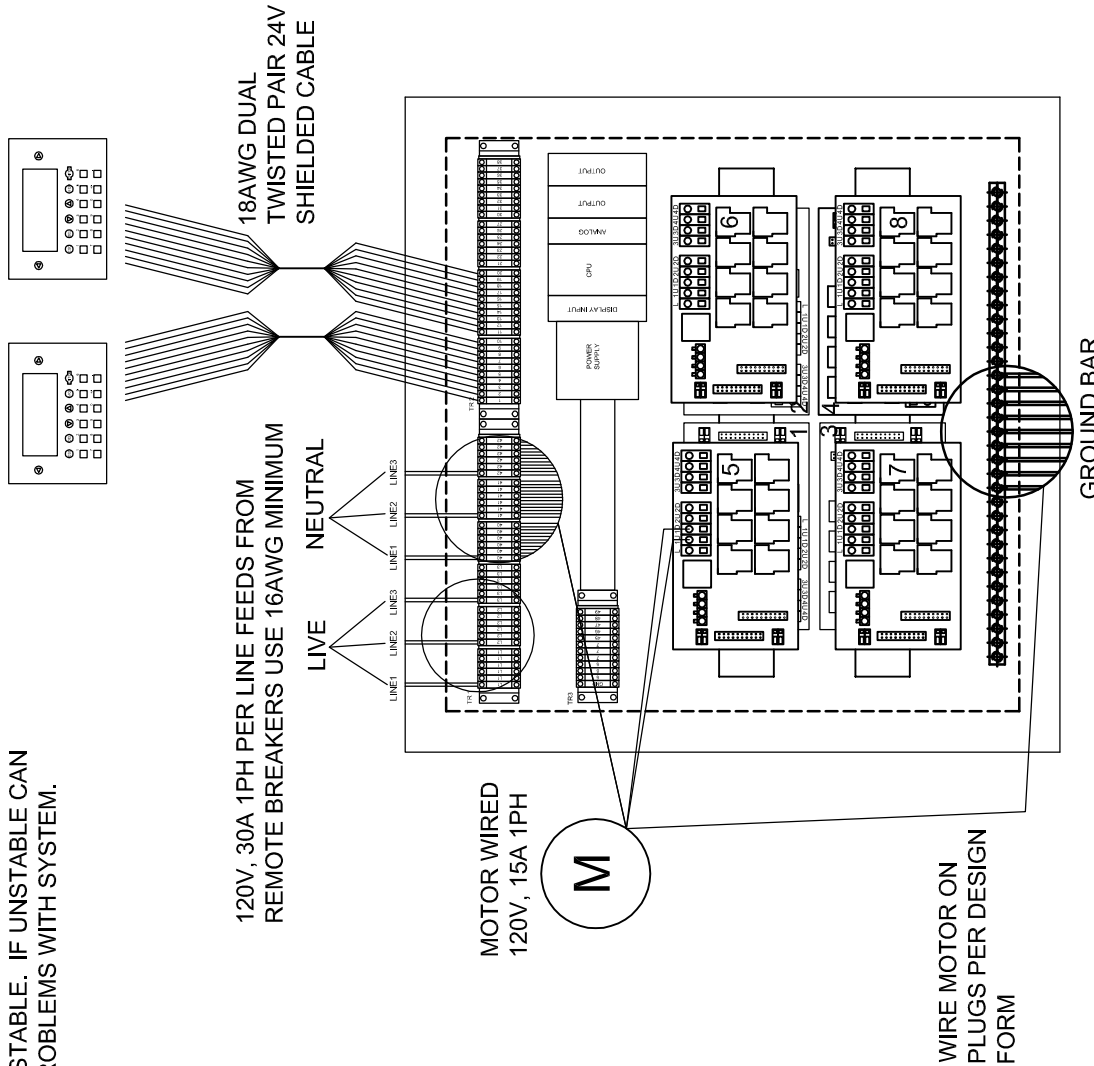
AUTHORIZED USER MUST HAVE FULL VIEW OF GYMNASIUM EQUIPMENT AT ALL TIMES WHEN OPERATING.

ALL OTHER ELECTRICAL, JUNCTIONS AND SYNCHRONIZER BOXES ARE TO BE INSTALLED BY A CERTIFIED ELECTRICAL CONTRACTOR. FOLLOW ALL LOCAL CODES AND MANUFACTURER'S INSTRUCTIONS.

NOTE: INSTALL CONTROL INTERFACE IN A 12X12X6 JUNCTION BOX

IMPORTANT: THE SHIELD OF THE COMMUNICATION WIRE BETWEEN THE RELAY BOX AND THE INTERFACE MUST BE GROUNDED

IMPORTANT: THE VOLTAGE PROVIDED MUST BE STABLE. IF UNSTABLE CAN CAUSE PROBLEMS WITH SYSTEM.



NOTE: THIS DRAWING IS FOR REFERENCE ONLY. REFER TO THE TSC INSTALLATION WIRING INSTRUCTIONS INCLUDED IN THE SUBMITTAL PACKAGE FOR SPECIFIC WIRE TERMINATION INFORMATION.

REVISION		
REV.	DATE	BY
-	-	-




Gared Holdings, LLC
9200 E. 146th St. Noblesville, IN 46060

THIS DOCUMENT CONTAINS TRADE SECRET AND OTHER MATERIALS WHICH ARE PROTECTED BY CONFIDENTIALITY NOTICE AND AGREEMENT AND BY COPYRIGHT. ANY USE OR COPYING OF THIS DOCUMENT EXCEPT AS AUTHORIZED BY GARED HOLDINGS, LLC IS STRICTLY PROHIBITED.

TSC 2000 X					
DRAWN	PERRY	DATE	05/05/08	MATERIAL	N/A
APPROVED	CONNERLEY	DATE	05/05/08	FINISH	N/A
FILE LOC. Q:\Final Release\Specifications			DWG. NO.	TSC2000X	
SIZE	SCALE	SHT. NO.	PART NO.	REV	
A	NOTED	1 OF 1	TSC2000X	A	



TSC2000X TOTAL SYSTEM CONTROL KEYPAD

RECOMMENDED APPLICATION

The TSC2000X Total System Control unit allows one touch operation of basketball backstops, divider curtains, lighting, scoreboards, P.A. systems or just about any other electrically controlled equipment through a wall-mounted keypad.

SPECIFICATIONS

One keypad and relay box will operate eight motorized systems and auxiliary operations (lighting, scoreboards, etc.). System uses twenty multi-function keys with illuminated 4 line, 20-character LCD display for easy readout. Operates on 110 Volts with keypad communications at 24 Volts DC and mounts in standard twelve by twelve by six inch deep enclosure. Relay panel (24" x 24" x 6") can be mounted in any remote location.

System will operate equipment individually and has custom program options for multiple equipment configurations such as "game day" or "practice" set-up. System has expandability for operating additional equipment by adding relay cards. System can operate up to 6 devices at once.

Optional At Additional Cost

1. 15' remote operator button available with manual override.
2. Additional motors upgrading to 16,24 or 32
3. Emergency stop button at display location.
4. Display window guard.
5. Additional keypad
6. Uninterruptible power supply

SAFETY FEATURES

Password controlled to prevent unauthorized use. "Press and hold" button feature prevents authorized operator from walking away while equipment is in motion. Auto shut-off after thirty seconds of non-use. Unit is self-diagnostic and has voltage-sensing shutdown feature in case of overload, and will recommend electrical maintenance if needed.

WARRANTY

The TSC2000X Total Control System has a one-year warranty covering defects in material and workmanship.

All other electrical, junction and synchronizer boxes not mentioned above to be furnished and installed by a certified electrical contractor. Follow manufacturer's instructions and all local safety codes

Subject to design change and current manufacturing practices.
Revised May 4, 2011 ©2008 Gared Holdings, LLC.