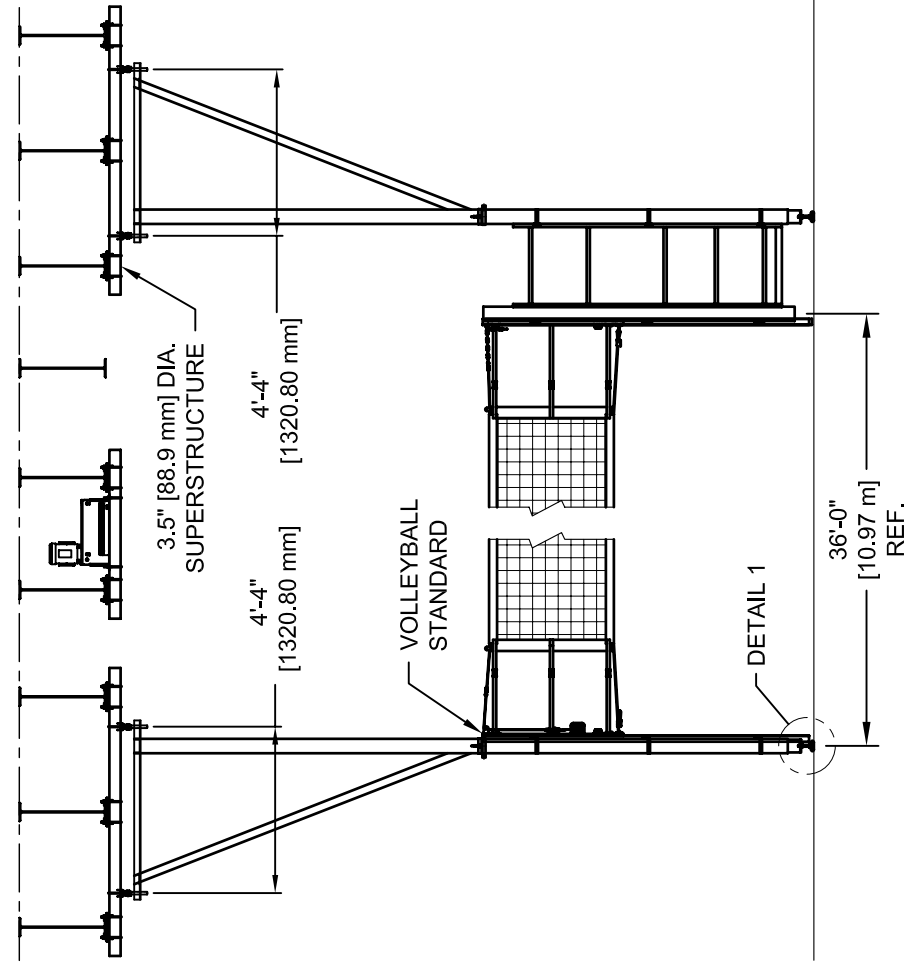
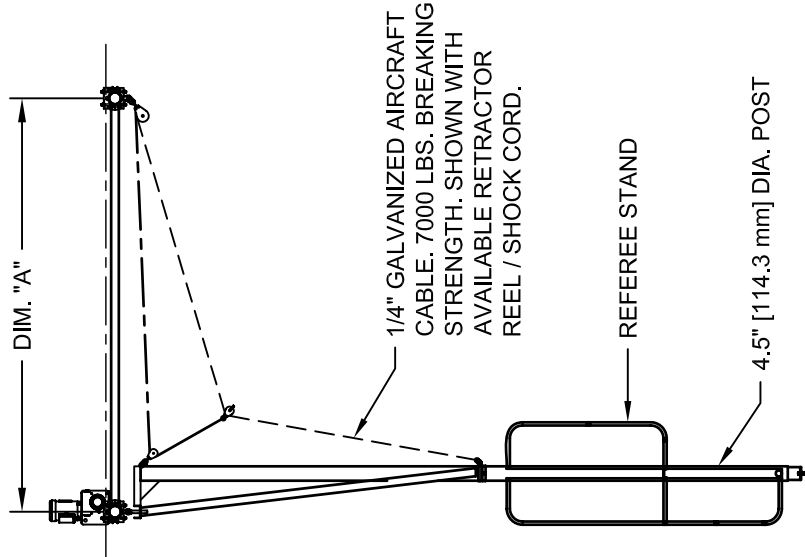
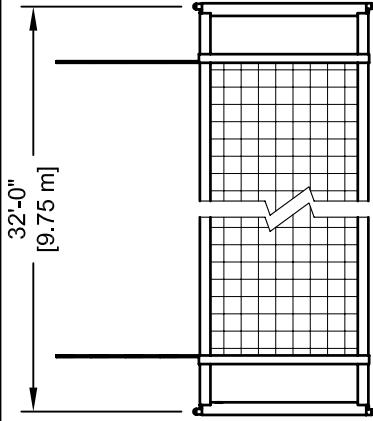
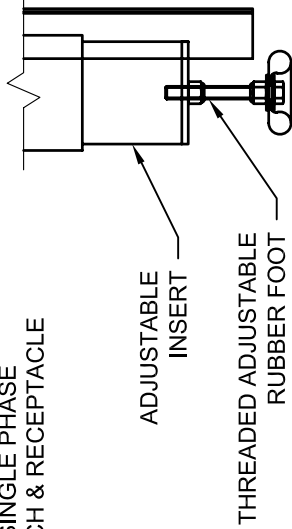


MOTOR DATA:
1 HP, 120 VOLT, SINGLE PHASE
WITH KEY SWITCH & RECEPTACLE



-DESIGNED TO REQUIRE NO FOLDING BRACING.
-ADJUSTABLE LENGTH FOR BUILDING VARIATIONS.
-DESIGNED TO ACCOMMODATE NET SPORTS FROM MEN'S VOLLEYBALL HEIGHT TO TENNIS HEIGHT.
-DIMENSION "A" IS DEPENDENT ON BUILDING HEIGHT. CONTACT PSS FOR SPECIFIC INFORMATION.

REVISION		
REV.	DATE	BY
A	01/12/07	WAE
B	06/04/08	RWP



Gared Holdings, LLC
9200 E. 146th St. Noblesville, IN 46060

THIS DOCUMENT CONTAINS TRADE SECRET AND OTHER MATERIALS WHICH ARE PROTECTED BY CONFIDENTIALITY NOTICE AND AGREEMENT AND BY COPYRIGHT. ANY USE OR COPYING OF THIS DOCUMENT EXCEPT AS AUTHORIZED BY GARED HOLDINGS, LLC IS STRICTLY PROHIBITED.

SUSPENDED VOLLEYBALL SYSTEM W/ REF. STAND

DRAWN	SNOW	DATE	09/16/05	MATERIAL	N/A
APPROVED	ATS	DATE	09/16/05	FINISH	N/A
FILE LOC. Q:\Final Release\Specifications				DWG. NO.	8001R
SIZE	SCALE	SHT. NO.	PART NO.	REV	
A	NONE	1 OF 1	8001R	B	



MODEL 8001R

CEILING SUSPENDED VOLLEYBALL SYSTEM WITH INTEGRAL REFEREE STAND

RECOMMENDED APPLICATION

Top quality unit for use in facilities where frequent volleyball court set-up is required. Meets all grade school, middle school, YMCA, club, USVBA, NFHS, and NCAA requirements for competitive play.

FRAMES

System will be comprised of two vertical frame members hinged at the truss connection point to allow the system (net, frames, padding, antenna, etc.) to fold as a single unit. Frames shall be 4-1/2" diameter heavy wall tubing, extended to the floor in the down position, to support tension loads from net and prevent swing loads from play. Frames shall be laterally braced by means of a 2" x 3" rectangular sway brace.

Frames shall be folded to the stored position by means of a 1 hp electric winch.

The frames will provide net attachment rails that have infinite net height adjustment between tennis height and 8'-4" to meet all age group height settings for both men and women.

REFEREE STAND

The referee stand is included as an integral piece of the system. The stand may be placed at either end of the net during installation. The stand is positioned inside of the frame and helps support the net load.

NET TENSIONER (WINCH)

The net tensioner shall incorporate a heavy duty, self-locking ratchet mechanism with a positive compression clutch brake type release. A high tensile nylon strap will be used with the winch to achieve required net tension.

NET

Net features include 1" diameter wood dowel and 4" square black nylon mesh (250-lbs tensile strength) for excellent performance and durability. Free floating net along 1/8" diameter steel 7 x 19 cable (1,760-lbs. Minimum breaking strength) allows for quick and easy centering of net about the court lines. Nylon straps with metal clips are used to secure net in place. Net shall be 32' length and 39" width. Net perimeter shall have a 2" wide vinyl coated polyester hem that is double stitched. Net meets or exceeds all requirements for most levels of competition.

UPRIGHT PADS

Upright safety pads shall be one single piece 72" in height. Padding shall be constructed with 1 1/2" thick cross-linked polyethylene closed cell foam covered with 14-ounce nylon reinforced vinyl. Attachment to uprights shall be with Velcro® straps. Standard Colors are: white, yellow, orange, red, kelly green, forest green, royal blue, marine blue, navy blue, gray, black, maroon, beige, and purple.

NET ANTENNA AND TAPE

Net antenna shall be 3/8" diameter fiberglass rods 72" long with alternating red and white bands. Net tape shall be white nylon reinforced vinyl 2 1/2" wide with full-length pocket to accept the antenna. Attachment to net shall be full-length quick action Velcro® closures.

United States Patent No.: 7,344,458

Subject to design change and current manufacturing practices.
Revised April 4, 2008 ©2008 Gared Holdings, LLC