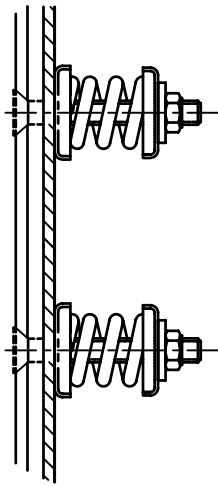
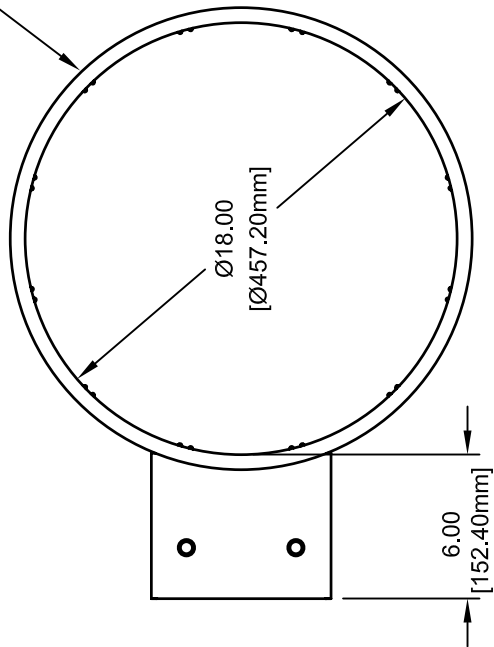


Ø0.62 [15.88] STEEL ROD (UPPER)
 Ø0.50 [12.70] STEEL ROD (LOWER)



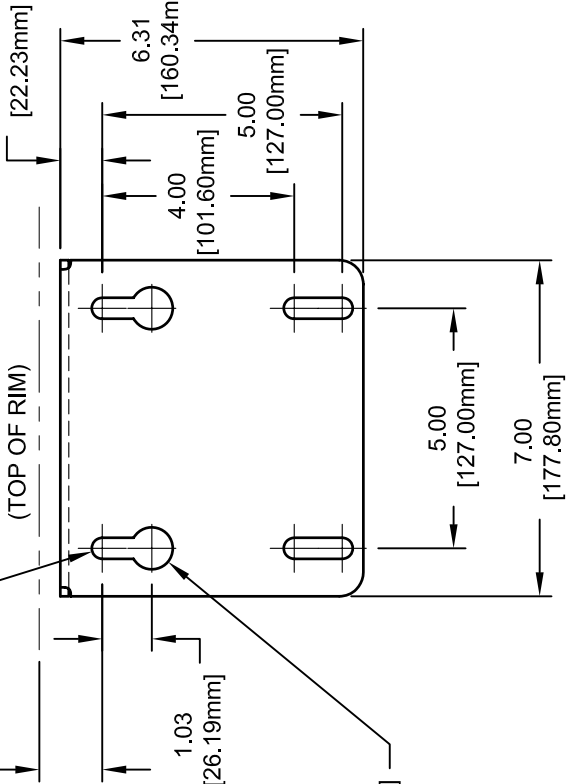
DUAL RETURN SPRINGS
 SCALE 2:1



R0.22
 [R5.56mm]
 TYP.

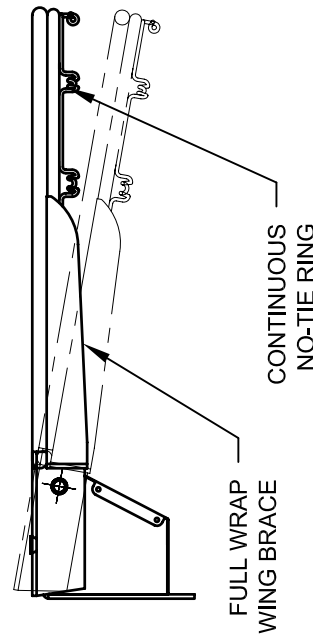
1.31
 [33.34mm]

0.88
 [22.23mm]



R0.44
 [R11.11mm]
 (2) PLACES

MOUNTING PLATE VIEW
 SCALE 2:1



CONTINUOUS
 NO-TIE RING
 FULL WRAP
 WING BRACE

NOTE:
 OFFICIAL ORANGE POWDER COAT FINISH.
 GOAL IS SUPPLIED WITH NYLON NET AND
 MOUNTING HARDWARE.

REVISION		
REV.	DATE	BY
A	12/20/06	WAE
B	04/21/08	RWP



Gared Holdings, LLC
 9200 E. 146th St. Noblesville, IN 46060

THIS DOCUMENT CONTAINS TRADE SECRET AND OTHER MATERIALS WHICH ARE PROTECTED BY CONFIDENTIALITY NOTICE AND AGREEMENT AND BY COPYRIGHT. ANY USE OR COPYING OF THIS DOCUMENT EXCEPT AS AUTHORIZED BY GARED HOLDINGS, LLC IS STRICTLY PROHIBITED.

PLAYGROUND DOUBLE RING BREAKAWAY GOAL

DRAWN	CONNERLEY	DATE	12/03/03	MATERIAL	N/A
APPROVED	JJC	DATE	12/03/03	FINISH	AS NOTED
FILE LOC.	Q:\Final Release\Specifications			DWG. NO.	5500
SIZE	SCALE	SHT. NO.	PART NO.	REV	
A	NONE	1 OF 1	5500	B	



MODEL 5500

PLAYGROUND DOUBLE RING BREAK-AWAY GOAL

The 5500 goal shall be constructed with a unique stack spring construction for true rebound consistency. Goal shall double in degrees according to the applied pressure. Goal shall have an official sized 18" ring of 5/8" diameter steel and shall be supported by a continuous welded wraparound brace. Goal shall meet NCAA and high school requirements.

Goal shall have a continuous no tie net attachment and orange powder coated finish. Nylon net and hardware shall be included. Universal goal mounting plate will fit hole patterns for most 42" and 48" rectangular backboards and most fan-shaped backboards.

ACCESSORIES

BACKBOARDS

Compatible backboards are models LXP4200, AFRG42, RG, AFRG48, FSGII, 1301B, 1342B, 1370B, 1401B, 1442B, 3010RG, 3011RG, ARG, 3050RG, BB48A38, BB60A38, BB60G38, BB72A38, BB72G50, and GP72422. See backboard section in specification manual.