



**Model: 5100**  
**OmniSteel™ Volleyball System**



**Installation, Operation and Maintenance Instructions**

---

**Please read all instructions before attempting installation or operation of these units**

---

**SAVE THESE INSTRUCTIONS FOR FUTURE USE**

PUBLICATION No.  
6 0 1 7 5 5 4 1 7



# 5100 OmniSteel™ Volleyball System



## *Table of Contents*

<b><u>Section</u></b>	<b><u>Page No.</u></b>
Introduction	2
Parts Checklist	3
Floor Sleeve Installation	4-5
Floor Cover Installation	6
Net Installation Instructions	7-9
Maintenance and Check Sheet	10



# 5100 OmniSteel™ Volleyball System



## Introduction

Thank you for your purchase of a Gared Sports OmniSteel™ Volleyball System. To ensure that our equipment will provide years of use to you, we are including this installation, operation, and maintenance guide. This guide will provide information on the proper assembly and installation methods, operating procedures, and preventative maintenance of your volleyball system.

Please note that a Bill of Materials is being included with this guide. Please check that all of the parts called out on the Bill of Materials are present prior to beginning assembly and setup. Please do not substitute for factory parts. Please contact the PSS or Gared Sports customer service department and allow them to determine if substitute parts are acceptable.

It is recommended that an individual who has been properly trained perform the installation operation of the volleyball system.

To prevent normal wear and tear from shortening the life of the unit, preventative maintenance inspections and repairs should be performed at least once per year. If the units are subject to high or unusual usage, inspections should be scheduled to occur more frequently. If items are found to be nonconforming, replacements can be ordered from PSS or Gared Sports or one of our authorized dealers. When contacting PSS or Gared Sports, please have information regarding the dealer/installer who sold the unit, the name of the project, and any applicable warranty information

### PARTS LIST BY SUB ASSEMBLY

PART NO.	DESCRIPTION	QTY.
6252	CABLE COVER SET	1 EACH
6404	FLOOR SLEEVE 3-1/2" O.D. X 9.0" TALL	2 EACH
1028-22-00	NET ANTENNA	1 PAIR
6430	6" BRASS FLOOR COVER	2 EACH
5106	3" STEEL VOLLEYBALL WINCH POST	1 EACH
5107	3" STEEL VOLLEYBALL END POST	1 EACH
7607-22-00	NET SIDELINE MARKER	2 EACH
601654708	VOLLEYBALL NET	1 EACH

Note: Number 6404 & 6430 are normally shipped early. Sleeve and floor covers are shipped early to be installed at time of original construction. Posts are shipped fully assembled.



## Set-up Guide

### Parts Checklist

Verify all parts listed on packing list are present prior to installation.

#### Floor Sleeves/Covers Plates (These may ship early and separately)

- Floor Sleeves  OK
- Cover Plates  OK

#### Upright Posts (Refer to drawings or pictures in the instructions)

- End Post(s)  OK
- Winch Post(s)  OK

#### Net/Cable Hardware

- Cable  OK
- Winch (es) & Hardware  OK
- Antenna(s)  OK
- Net(s)  OK

#### Padding

- Upright Pads  OK
- Chain & Cable Covers  OK

#### Optional Accessories

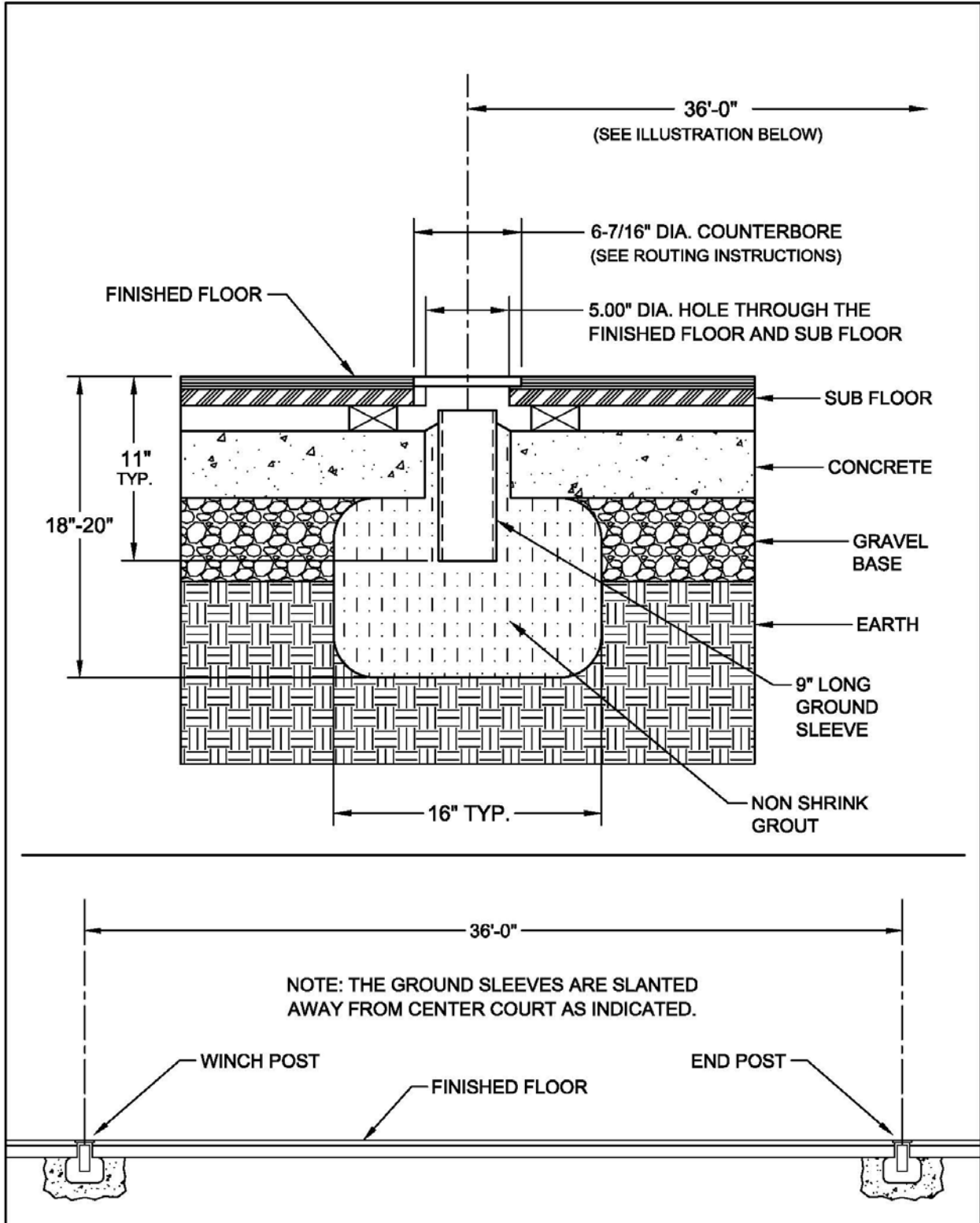
- Referee Stand  OK
- Equipment Cart  OK
- Storage Devices  OK



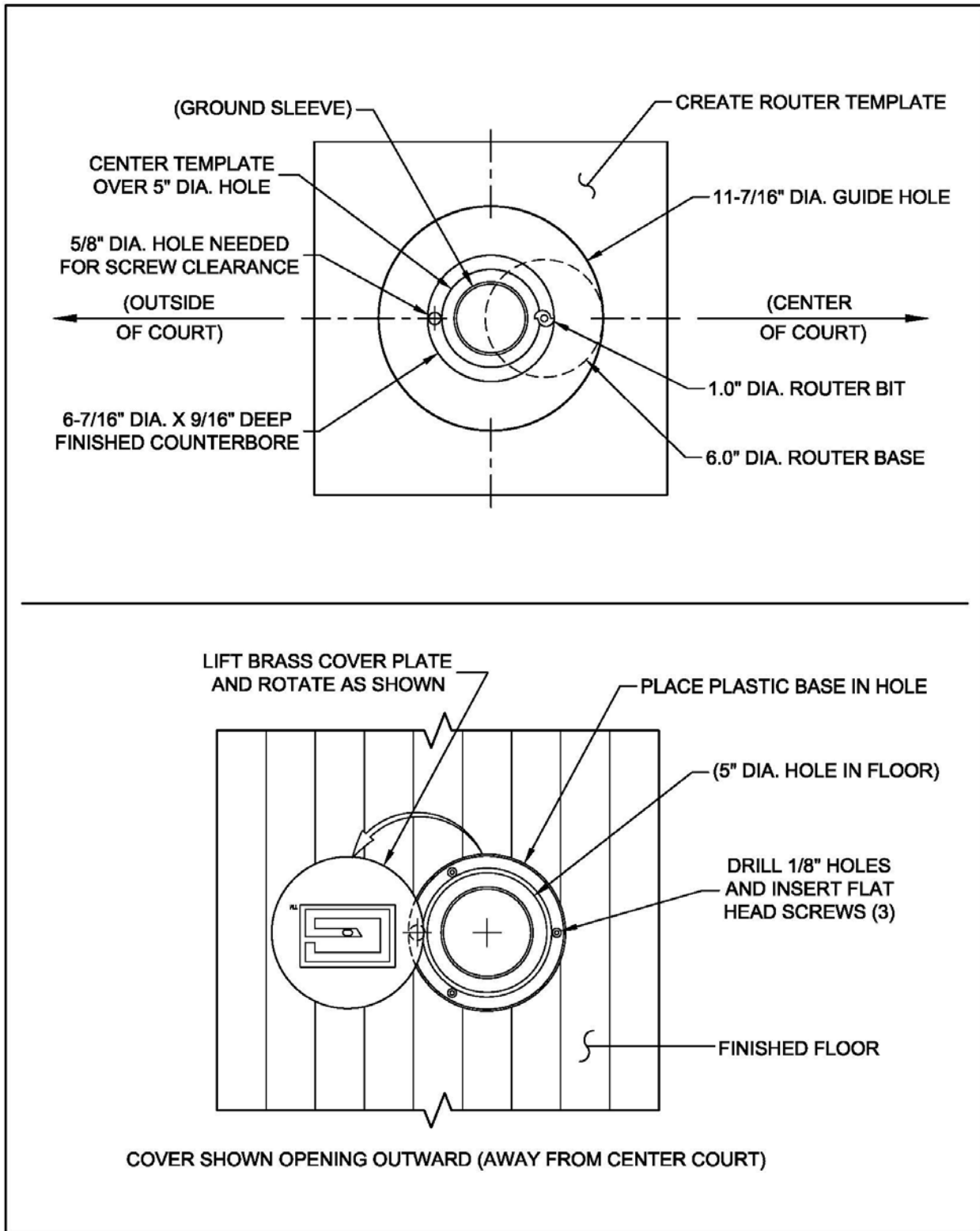
### Floor Sleeve Installation

1. Mark (2) spots on the floor exactly 36 feet apart (refer to most recent set of architectural prints for exact locations within the gym). These represent the CENTERS of each sleeve installation. If sleeves are to be more or less than 36 feet apart, contact a PSS or Gared representative for information regarding this alteration.
2. Cut (2) round holes 5" in diameter through the playing surface and centered on the spots marked in step one. (See pages 8 & 9)
3. After cutting out the circle in the surface flooring, cut a similar hole in the concrete slab below. The diameter of this hole should also be 5", however the size is not critical. The hole must be large enough to accommodate the sleeve with room for grout.
4. When drilling the hole in concrete, the slab must be fully penetrated. Under the slab, hollow out (by hand) an area about 16-20 inches deep from the playing surface. The hole should be about 6 to 8 inches deeper than the bottom of the sleeve once it is inserted. (See page 8)
5. It is recommended that a "non-shrink" grout be used to anchor the sleeve. Pour the grout mixture into the hole until it is just below the BOTTOM of the concrete hole. Cover the sleeve during installation to prevent debris from falling into it or grout from entering bottom of sleeve.
6. Insert the 3 1/2" O.D. sleeve and work it down into the grout until the inside bottom of the sleeve is 11" below the TOP surface of the floor. Incorrect sleeve depth will result in a net height error. Make sure the sleeve is vertical, perpendicular to the playing surface. (See page 5)
7. Wait a minimum of (7) days to allow the grout to cure before setting up the posts.
8. Using a router and template, make a counterbore 6-7/16" diameter by 9/16" deep centered over the original 5.0" hole in the floor, to receive the brass floor cover with plastic base. A template can be made from a piece of Masonite or thick plastic. Make a hole in the template material so that when the router is used with it, the counter bore achieves a good fit. Many router bit and template combinations are possible. **A skilled woodworker will be needed for this operation!** A finished counterbore of 6-7/16" diameter is what is important! Practice on a piece of scrap wood first. If the hole is too big, corrections may not be possible. (see page 6)
9. Install the floor covers. Place floor covers; drill holes and install screws as shown. (see page 6)

**Installation Instructions for Ground Sleeves**

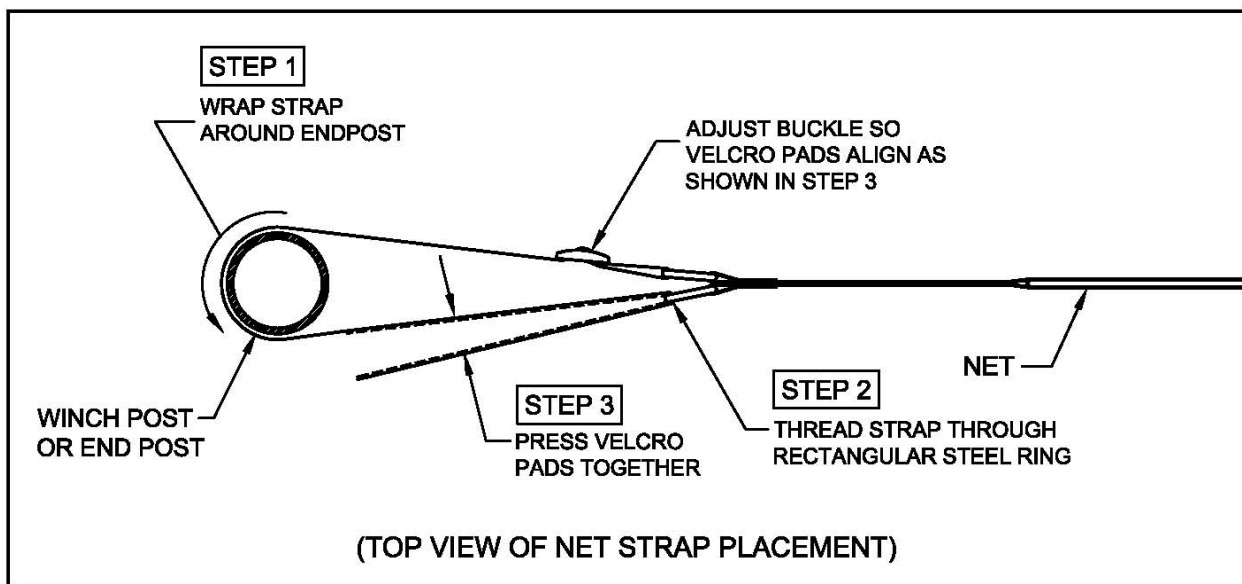


**Counterbore Details and Floor Cover Installation**

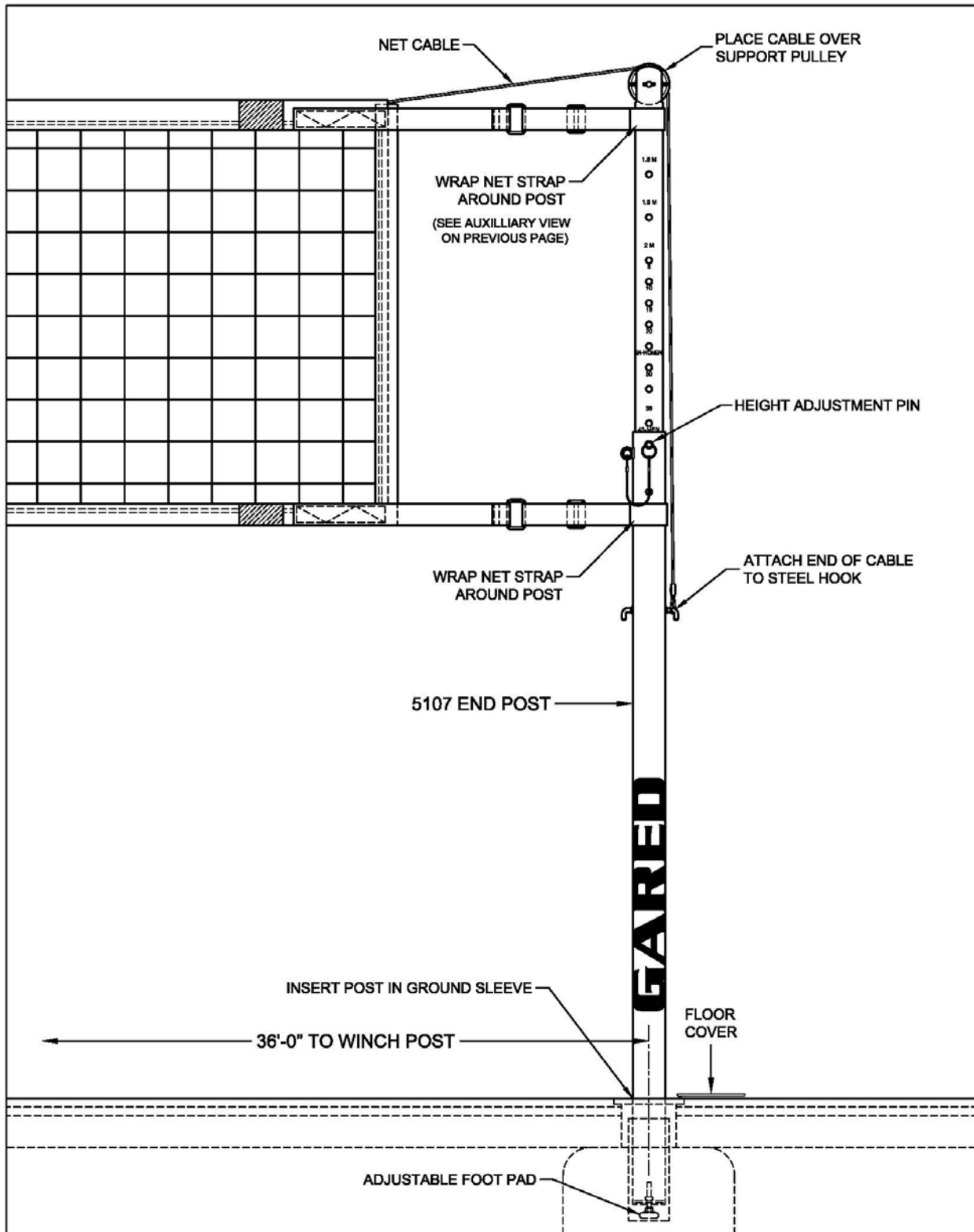


**Net Installation Instructions**

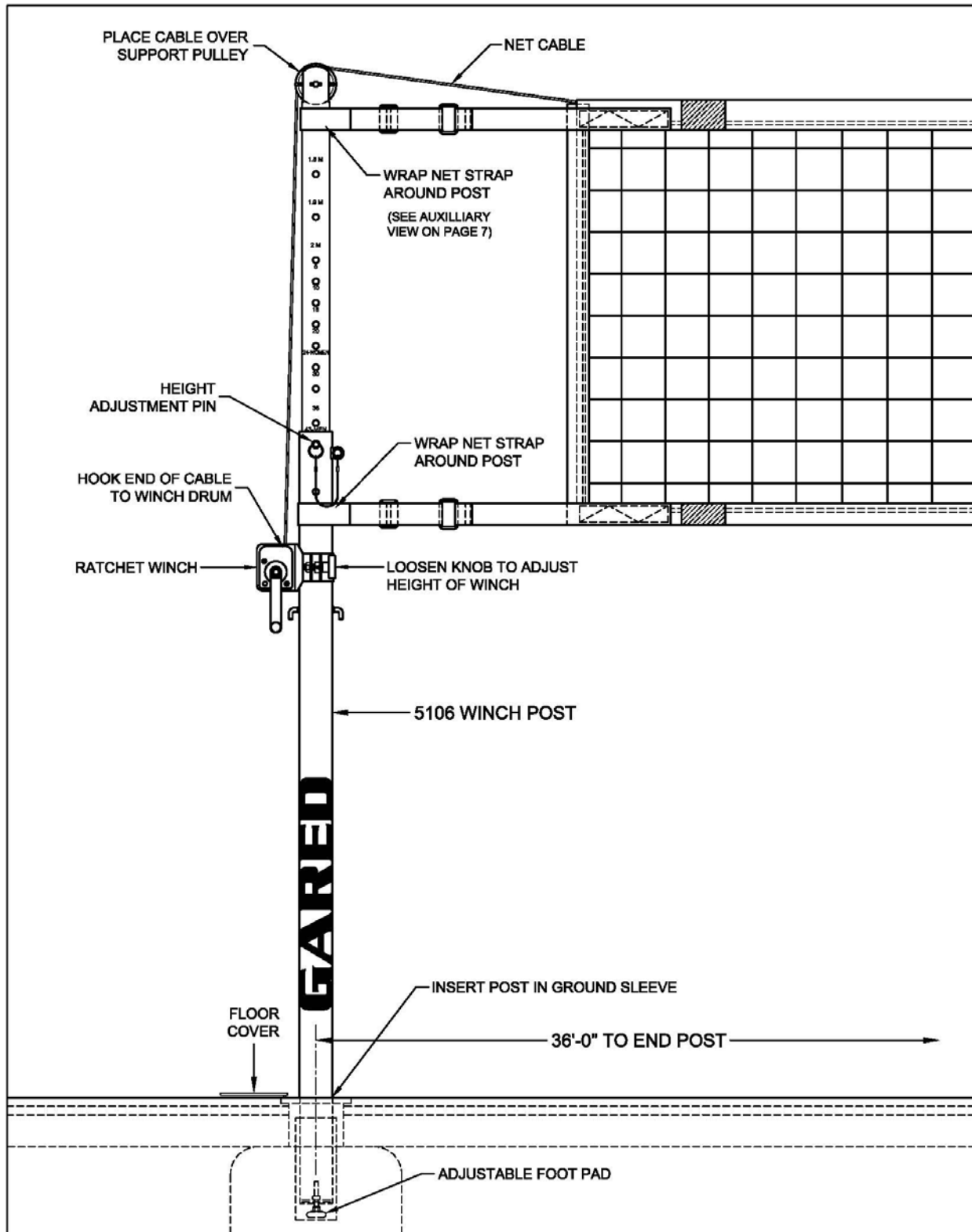
1. Lift and rotate brass floor covers out of the way. Insert the winch post and end post.
2. Remove adjustment pin to change height of upper telescopic tubes. Reinsert at the desired playing height. Heights are marked for men’s and women’s play.
3. Begin attaching the net by placing the top net cable over the support pulley of the **End Post** and attaching it to the steel hook as shown on page 8.
4. Next, wrap the other end of the cable over the support pulley of the **Winch Post** and down to the winch. Attach the end of the cable to the hook on the winch drum as shown on page 9. Turn the winch handle clockwise to tighten the net. Turn the handle counter-clockwise to loosen the net.
5. The height of the net will vary with the tightness of the cable. Minor height adjustments can be made by screwing the foot pads on the bottom of the posts in or out. (Posts must be removed from the floor sleeves to make these adjustments).
6. Center the net on the cable. There should be the same amount space between the net and the posts at each end. Now attach the upper and lower net straps. Undo the Velcro straps as they come shipped with the net. Wrap the straps around the end posts and through the rectangular steel rings as shown in the illustration. Pull straps tight and press the Velcro surfaces together. (see illustration below). These straps are responsible for maintaining the net tension and should be adjusted as required. Expect stretch in the net.



**Details - End Post with Net**



**Details – Winch Post with Net**





# 5100 OmniSteel™ Volleyball System



## Maintenance

1. General inspection of equipment when used should be performed to ensure no catastrophic failures have occurred during the course of use between yearly inspections.
2. It is recommended that yearly inspections be conducted to determine if any bolts or any other hardware has become worn or loosened. A sample check sheet has been provided for you in this guide.
3. During yearly inspections, all moving parts should be inspected while in operation. Key points to look for include rotation points where bushings contact metal, winches, and pulleys.
4. Any loose bolts or nuts should be tightened.
5. Check sliding components and straps for wear.

## Maintenance Check Sheet

Date: \_\_\_\_\_

Unit: \_\_\_\_\_.

### Anchors/Floor Sleeves

-Anchors/bolts                      OK     Repair     Replace

-Floor sleeves/covers              OK     Repair     Replace

### Unit Supports / Brackets / Hinges

-Tubes; dents, stress spots, etc.    OK     Repair     Replace

-Bolts; loose, deformed, etc.    OK     Repair     Replace

-Brackets/Hinges; bent, not rotating, etc.  
OK     Repair     Replace

### Winch/Strap

-Winch; binding, loose, etc.    OK     Repair     Replace

-Hardware; Quick links              OK     Repair     Replace

### Sliding Components

-Locking Mechanisms              OK     Repair     Replace

### Safety Padding

-Velcro Function                      OK     Repair     Replace

-Vinyl Condition                      OK     Repair     Replace

Replacement parts and / or service to the equipment can be obtained from your local PSS or Gared dealer or installer. To find your local PSS or Gared dealer, visit us online or contact customer service department at the web address or phone number listed on the last page of this manual.



**Gared Holdings, LLC**

**Performance Sports Systems**  
9200 E. 146<sup>th</sup> Street  
Noblesville, IN 46060

800-848-8034  
[www.perfsports.com](http://www.perfsports.com)

**Gared Sports**  
707 North 2<sup>nd</sup> Street  
St. Louis, MO 63102

800-325-2682  
[www.garedsports.com](http://www.garedsports.com)