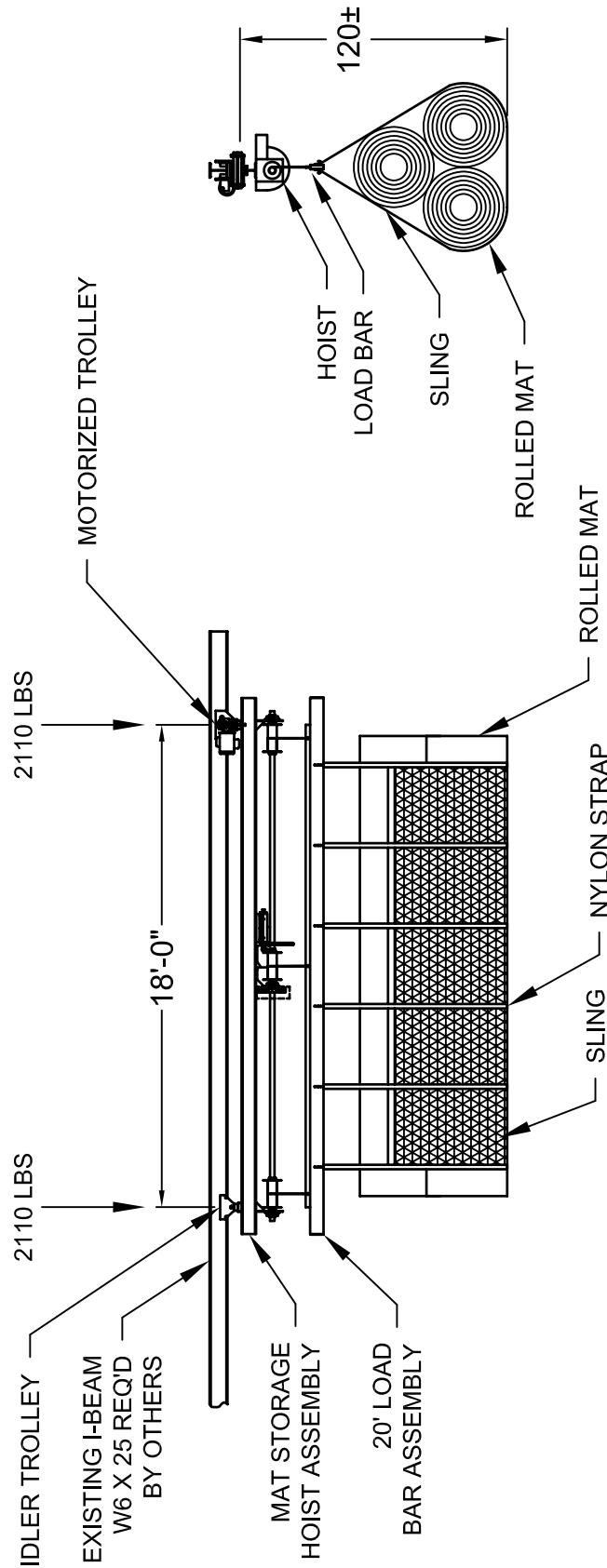


ELECTRICAL DATA:

STANDARD ELECTRICAL CONFIGURATION IS 208V 3 PHASE. SEE 4095SCH FOR DETAILED WIRING DIAGRAM.

OTHER AVAILABLE VOLTAGES ARE 220V 3 PHASE, AND 480V 3 PHASE. PERFORMANCE SPORTS SYSTEMS DOES NOT SUPPLY DISCONNECTS OR RECEPTACLES FOR CONNECTION TO BUILDING ELECTRICAL CIRCUIT.

WHEN SPECIFYING 3 PHASE ELECTRICAL POWER, MAKE SURE ELECTRICAL CONTRACTOR REVIEWS SPECIAL NOTES FOR MOTOR ROTATION AND LIMIT SWITCH OPERATION NOTED IN INSTALLATION MANUAL FOR 3 PHASE OPERATION.



WEIGHT OF 4090 MAT STORAGE HOIST ASSEMBLY	=	1860 LBS
WEIGHT OF 4090 MAT STORAGE RIGGING	=	596 LBS
WEIGHT OF (1) 42' X 42' ROLLED MAT, LOAD BAR, & SLING	=	1764 LBS
TOTAL	=	4220 LBS

NOTE: FIELD VERIFY THE STRUCTURE (SUPPLIED BY OTHERS) THAT THE MAT STORAGE ASSEMBLY WILL BE MOUNTED ON BEFORE PRODUCTION TO MAKE SURE THE PROPER TROLLEYS ARE SENT FOR ATTACHMENT.

REVISION		
REV.	DATE	BY
A	12/17/03	MJB
B	09/10/07	JJC




Gared Holdings, LLC
9200 E. 146th St. Noblesville, IN 46060

THIS DOCUMENT CONTAINS TRADE SECRET AND OTHER MATERIALS WHICH ARE PROTECTED BY CONFIDENTIALITY NOTICE AND AGREEMENT AND BY COPYRIGHT. ANY USE OR COPYING OF THIS DOCUMENT EXCEPT AS AUTHORIZED BY GARED HOLDINGS, LLC IS STRICTLY PROHIBITED.

WRESTLING MAT CARRIER SYSTEM

DRAWN	CONNERLEY	DATE	05/09/03	MATERIAL	N/A
APPROVED	JJC	DATE	05/09/03	FINISH	N/A
FILE LOC. Q:\Final Release\Specifications				DWG. NO.	4095
SIZE	SCALE	SHT. NO.	PART NO.		
A	NONE	1 OF 1	4095	REV	B



MODEL 4095

WRESTLING MAT CARRIER SYSTEM

RECOMMENDED APPLICATION

This unit allows user to gain storage space and reduce risk of injuries to students and coaches. It incorporates the use of a motorized trolley and idler trolley in conjunction with the Model 4091 Wrestling Mat Storage System. Once the mats are raised into the storage position, the motorized carrier will move the storage system into a storage area away from the main room.

SPECIFICATIONS

Refer to 4091 specification for mat hoist portion of the 4095 system.

OVERHEAD SUPERSTRUCTURE

The model 4095 Wrestling Mat Carrier System is supported from a single I beam supplied by general contractor.

DRIVE / SUPPORT STRUCTURE

The model 4095 Wrestling Mat Carrier System Raise/Lower function shall be operated by a 2 horsepower, 208 volt, 60 cycle, three phase instant reverse motor. The travel function shall be operated by ¼ horsepower, 208 volt, 60 cycle, three phase reversing motor. Other voltages available include 220 volt 3 phase or 480 volt 3 phase.

Unit includes a motorized trolley and an idler trolley connecting the mat storage system to the I-beam supplied by the general contractor.