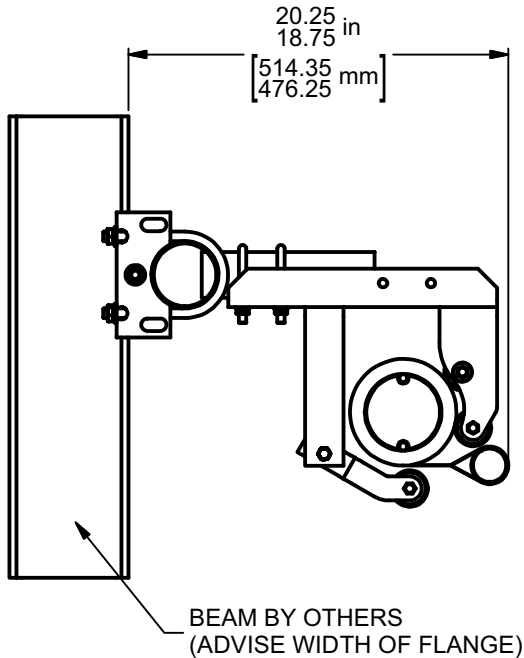
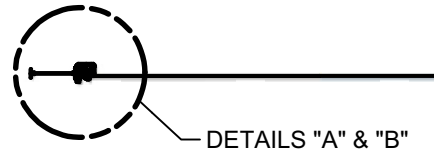
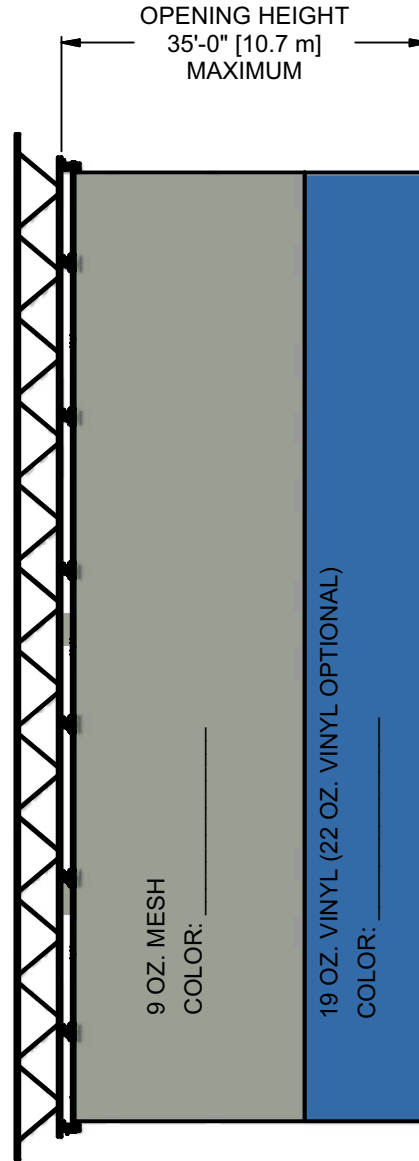


DETAIL "B"
CURTAIN DIRECT ATTACHED TO BEAM
(SHOWN IN THE UP POSITION)
SEE NOTE 2



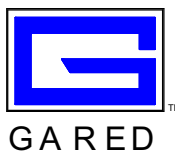
DETAIL "A"
BEAMS PERPENDICULAR TO CURTAIN
(SHOWN IN THE UP POSITION)



- 4" [101.6 mm] O.D. ALUMINUM DRIVE TUBE
- 1.9" [48.26 mm] O.D. STEEL ROLLERS
- 1.9" [48.26 mm] O.D. STEEL BOTTOM BATTEN
- PADDED BOTTOM BATTEN POCKET

NOTE 1: 22 OZ. VINYL ONLY AVAILABLE IN RED, ROYAL BLUE, OR GRAY
NOTE 2: DIRECT ATTACH CANNOT BE USED WHEN BEAM OR TRUSS IS NOT LEVEL WITHIN 1 INCH IN 50 FEET

REV	BY	DATE



Gared Holdings, LLC
9200 E. 146th St. Noblesville, IN 46060

THIS DOCUMENT CONTAINS TRADE SECRET AND OTHER MATERIALS WHICH ARE PROTECTED BY CONFIDENTIALITY NOTICE AND AGREEMENT AND BY COPYRIGHT. ANY USE OR COPYING OF THIS DOCUMENT EXCEPT AS AUTHORIZED BY GARED HOLDINGS, LLC IS STRICTLY PROHIBITED.

CURTAIN - TOP ROLL				
DRAWN	CONNERLEY	DATE	11/19/2009	DATE ISSUED
APPROVED	CONNERLEY	DATE	11/19/2009	11/19/2009
FILE LOC: Q:\Inventor Files\Specification Files				
SIZE	SCALE	SHT. NO.	PART NO.	REV
A	NONE	1 OF 1	4040XL	



MODEL 4040XL

TOP ROLL DIVIDER CURTAIN

OVERHEAD STRUCTURE

The Model 4040 divider curtain is supported from the roof structure by directly attaching to the underneath side of roof truss or by attaching to 3-1/2" O.D. horizontal and 2-3/8" O.D. vertical structural tubing supplied by PSS or Gared Sports. Maximum attachment height shall not exceed 35'. Bridge pipe will be required when truss spans exceed 14'. Superstructure shall be furnished with standard black finish. If special finish coat is required, specify final painting by painting contractor.

MATERIAL

The lower 8'0" (maximum) shall be solid 19 oz. or 22 oz. polyester reinforced, fire retardant and mildew resistant vinyl fabric. Seams shall be electronically welded with a full contact weld. A padded pocket shall be formed in bottom edge of curtain to accommodate a 1.9" O.D. bottom batten. Upper portion of curtain shall be 9 oz. vinyl coated polyester mesh. A pocket of vinyl shall be formed in top edge of curtain to accommodate a 1/4" nylon cord for attachment to 4" O.D. extruded aluminum drive pipe. Curtain shall stop 2" above finished floor.

DRIVE STRUCTURE

Curtains up to 325 lbs (including batten weight) shall be operated by one internal tubular motor (120 volt, 60 hertz, single phase). Curtains over 325 lbs (including batten weight) shall be operated by two synchronized internal tubular motors (120 volt, 60 hertz, single phase). Each motor has a maximum torque of 700 inch pounds with a speed of 14 rpm. Each motor shall be equipped with integral up and down limit switches. Each asynchronous motor is maintenance free, permanently lubricated, features overheating protection and has sturdy electrical and mechanical design for long life. Motors shall feature electromagnetic disk brake for smooth and accurate stop without slippage. This feature allows full braking power in the event of power failure. Motors shall also feature three-stage planetary gear mechanism for extremely quiet and reliable use. **Curtain does not require cables, belts or straps for operation.** Curtains requiring cables, belts or straps for operation shall not be considered equal.

Drive Shaft shall be supported by a carrier assembly spaced 9' +/- 2' center to center. Center support shall consist of a formed bracket with (2) 12" long steel rollers on which drive shaft shall rotate. Steel rollers shall have permanently lubricated bearings.

Motors shall utilize a flush mounted keyed switch to raise and lower the divider curtain. Key switch shall be located so that curtain is in full view of authorized operator at all times. Optional methods of operation include a Wireless Remote Control Operator or the Model 4060 TS C2000 Total System Control Keypad.

All electrical components to be located in overhead superstructure with the exception of the control switch. Curtains with (all) electrical components not located in overhead superstructure shall not be considered equal.

PSS or Gared Sports provides one (1) or two (2) motors with 6' cord(s), one (1) synchronizer control (when required), and one (1) 24 volt key switch. Junction boxes shall be mounted within 6' of each motor. Electrical wiring for curtain must be on a dedicated circuit. **All other electrical, junction and synchronizer boxes to be furnished and installed by a certified electrical contractor. Follow manufacturer's instructions and all local codes.**

Subject to design change and current manufacturing practices.
Issued November 19, 2009 ©2009 Gared Holdings, LLC