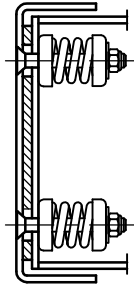
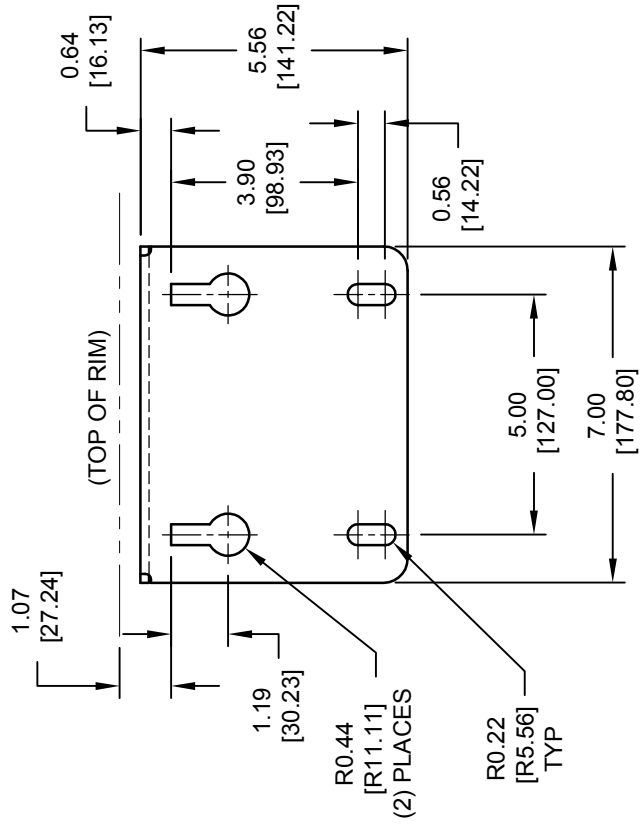
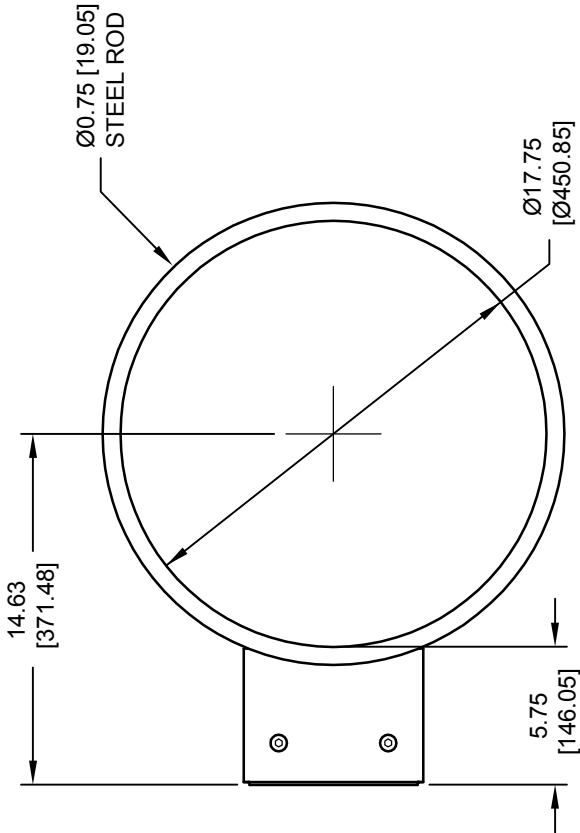


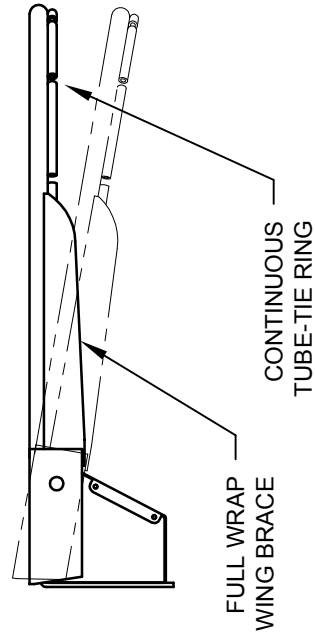
POSITIVE LOCK DETENT MECHANISM



DUAL RETURN SPRINGS



MOUNTING PLATE VIEW
SCALE 2:1



NOTE:
OFFICIAL ORANGE POWDER COAT FINISH.
GOAL IS SUPPLIED WITH ANTI-WHIP
NYLON NET AND MOUNTING HARDWARE.

REVISION		
REV.	DATE	BY
-	-	-




Gared Holdings, LLC
9200 E. 146th St. Noblesville, IN 46060

THIS DOCUMENT CONTAINS TRADE SECRET AND OTHER MATERIALS WHICH ARE PROTECTED BY CONFIDENTIALITY NOTICE AND AGREEMENT AND BY COPYRIGHT. ANY USE OR COPYING OF THIS DOCUMENT EXCEPT AS AUTHORIZED BY GARED HOLDINGS, LLC IS STRICTLY PROHIBITED.

3500I INTERNATIONAL BREAKAWAY GOAL

DRAWN	PEELER	DATE	01/21/10	MATERIAL	N/A
APPROVED	JJC	DATE	-	FINISH	AS NOTED
FILE LOC.	Q:\Final Release\Specifications			DWG. NO.	3500I
SIZE	SCALE	SHT. NO.	PART NO.	REV	
A	NONE	1 OF 1			

3500I



MODEL 3500I

INTERNATIONAL POSITIVE LOCK BREAK-AWAY GOAL

The 3000I goal shall be constructed with an enclosed positive lock mechanism. Goal shall be designed so that any possible entrapment areas have been eliminated. Goal shall have an official FIBA size 17.75" ring of 3/4" diameter steel with tube tie net attachment and a durable orange powder coated finish. Anti-whip net and hardware shall be included. Universal back plate shall accommodate most 42" and 48" rectangular and fan shape backboards. Goal shall meet FIBA specifications.

ACCESSORIES

BACKBOARDS

Compatible backboards are models LXP4200, AFRG42, RG, AFRG48, FSGII, 1301B, 1342B, 1370B, 1401B, 1442B, 3010RG, 3011RG, ARG, 3050RG, BB48A38, BB60A38, BB60G38, BB72A38, BB72G50, and GP72422. See backboard section in specification manual.

Subject to design change and current manufacturing practices.
Revised April 4, 2008 ©2008 Gared Holdings, LLC