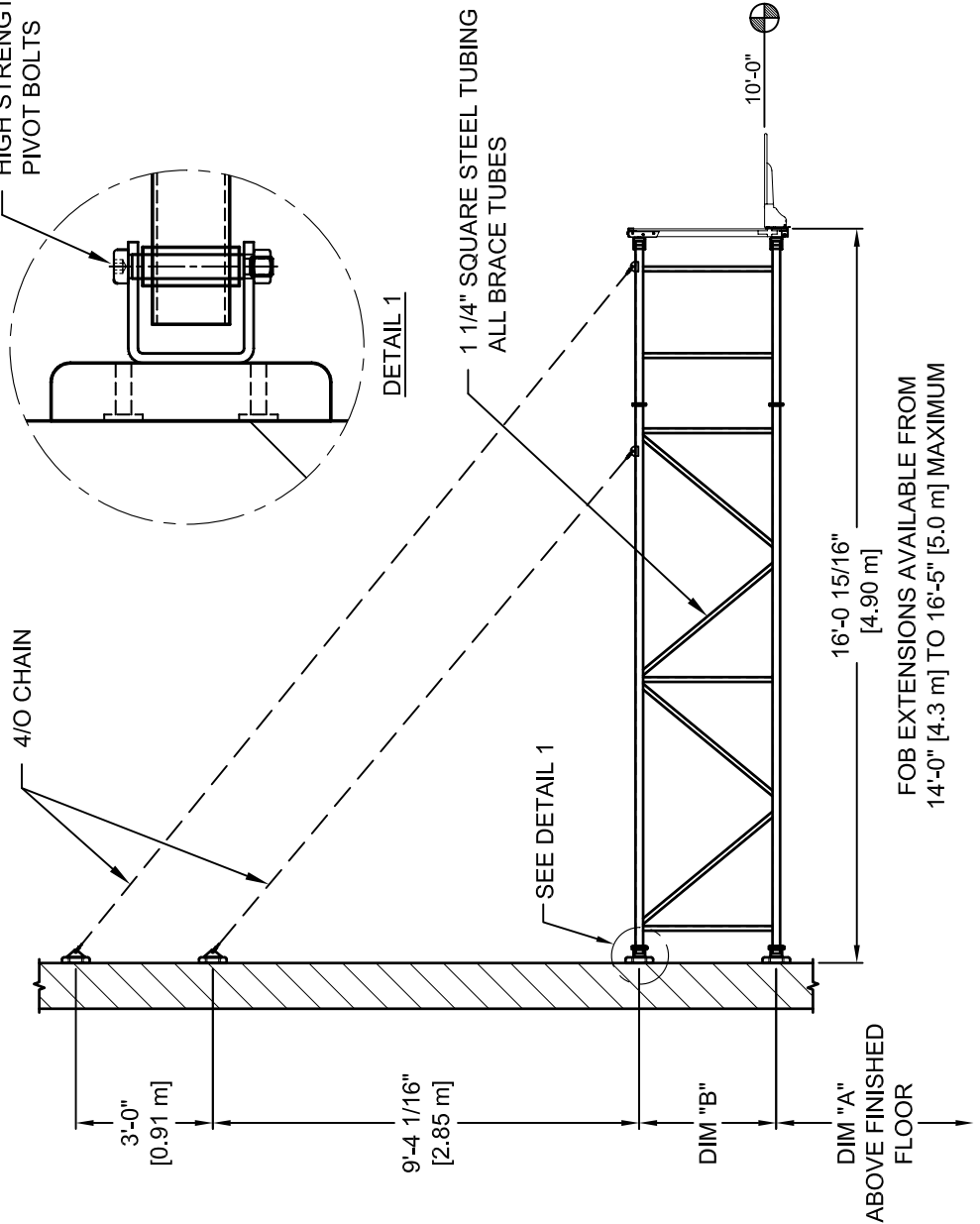
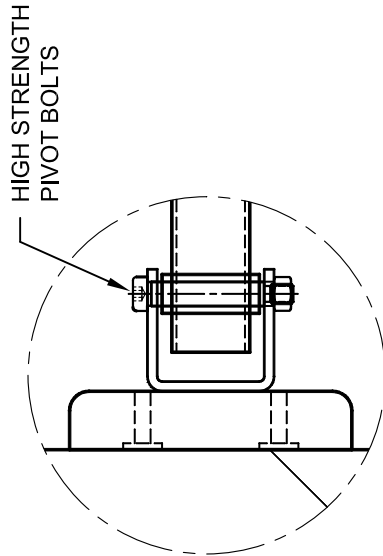
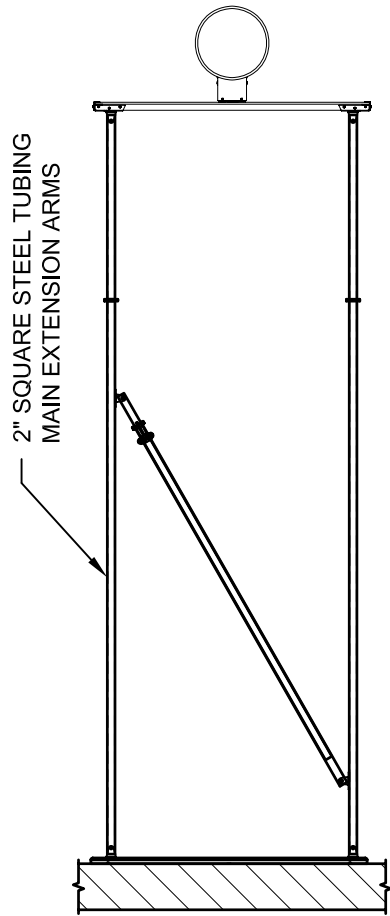


UNITS INSTALLED WITHOUT A-A-G		DIM "A"	DIM "B"
RECT. STYLE MOUNTING BACKBOARDS			
LXP4200	9'-9" (2.97M)	36" (.91M)	36" (.91M)
AFRG42	9'-8 7/8" (2.97M)	36" (.91M)	36" (.91M)
1442B	9'-8 7/8" (2.97M)	36" (.91M)	36" (.91M)



Gared Holdings, LLC
9200 E. 146th St. Noblesville, IN 46060

THIS DOCUMENT CONTAINS TRADE SECRET AND OTHER MATERIALS WHICH ARE PROTECTED BY CONFIDENTIALITY NOTICE AND AGREEMENT AND BY COPYRIGHT. ANY USE OR COPYING OF THIS DOCUMENT EXCEPT AS AUTHORIZED BY GARED HOLDINGS, LLC IS STRICTLY PROHIBITED.

WALL MOUNT - SIDE FOLD - OVER 14' [4.3 m]

DRAWN	ENGEL	DATE	01/08/09	MATERIAL	N/A
APPROVED	CONNERLEY	DATE	01/09/09	FINISH	N/A
FILE LOC. Q:\Final Release\Specifications				DWG. NO.	2500-1416
SIZE	SCALE	SHT. NO.	PART NO.	REV	
A	NONE	1 OF 1	2500-1416	-	

REVISION		
REV.	DATE	BY
-	-	-



MODEL 2500-1416

ADJUSTABLE SIDE FOLDING WALL MOUNT STRUCTURE FOR EXTENSIONS 14'-0" TO 16'-5"

RECOMMENDED APPLICATION

This unit is designed for applications allowing for mounting the backstop to the wall and requiring the unit to fold to the side for storage. The side folding wall mount is available in extensions from 14'-0" [4.3 m] to 16'-5" [5.0 m].

SPECIFICATIONS

WALL ATTACHMENT

Unit shall be attached to 2" x 9.25" clear coated wood pads. Unit will also be supported with 4/0 chain fastened to front of the unit and attached to a wood pad mounted on the wall. Wood pad will be mounted on an 8" minimum solid core concrete block wall or wall of similar integrity. All critical fittings shall be steel stampings or steel weldments.

BACKSTOP

The backstop shall be constructed of four 2" square steel tubes with 1 1/4" square steel tubes welded vertically and diagonally for bracing, spaced at 63" centers for a standard 72" x 42" backboard. The bottom horizontal main tubing shall be braced with diagonal telescoping pipes that lock in playing position. All pivot points are offset to allow maximum fold. All critical fittings shall be steel stampings or steel weldments. Backstop will be furnished with standard black finish. If special finish coat required, specify final painting by painting contractor.

ACCESSORIES

BACKBOARDS AND GOALS

All PSS and/or Gared 72" x 42" glass and wood backboards and goals are available on this unit. See the backboards and goals section in the specification manual.

BANK PADDING

See the accessories section in the specification manual.

HEIGHT ADJUSTER

Height adjusters are available for adjusting board heights between 8' and 10' for both rectangular and fan shaped backboards. See the accessories section in the specification manual.

CERTIFICATIONS

Unit meets all requirements of the NCAA and NFHS. Unit complies with design standards of the California Department of State Architects. Unit is approved by FIBA for international Level 2 competition. Certificate of Approval available.



Subject to design change and current manufacturing practices.
Revised April 4, 2008 ©2008 Gared Holdings, LLC