

REV.	DATE	BY
A	12/17/03	MJB
B	06/09/08	RWP

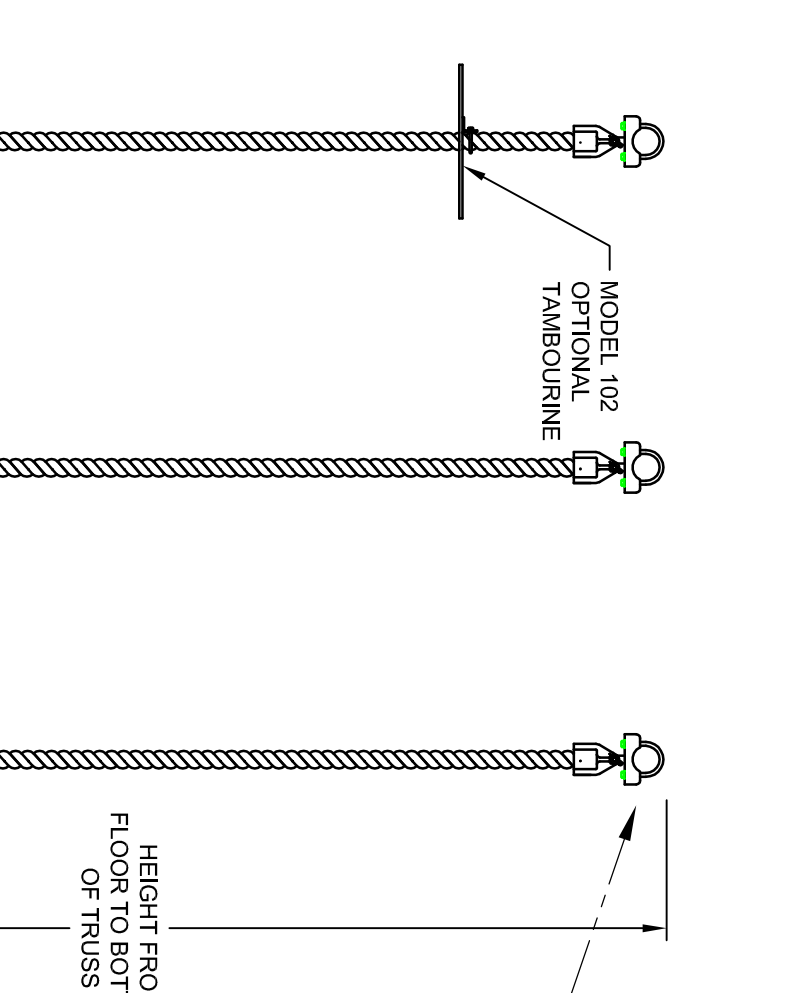
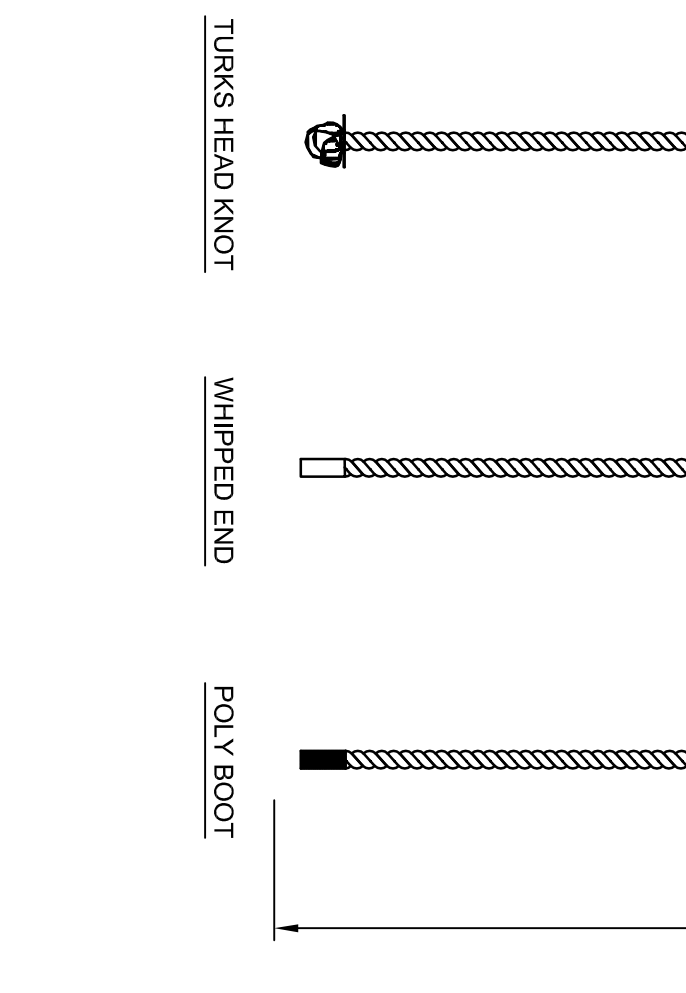
REVISION	DATE	BY

9200 E. 146th St.
Noblesville, IN 46060

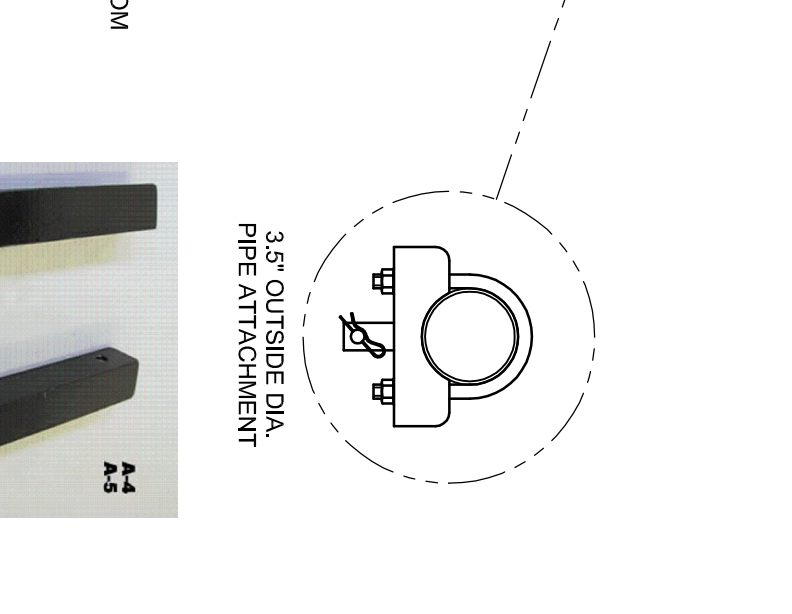
Gared Holdings, LLC




FILE LOC. Q:\Final Release\Specifications	SCALE	SIZE
DWG. NO. 102 AND 103	NOTED	A
DATE 05/08/03	SHT. NO. 1 OF 1	REV B
DATE 05/08/03	PART NO.	103
DATE 05/08/03	APPROVED JJC	
DATE 05/08/03	DRAWN CONNERLEY	
DATE 05/08/03	MATERIAL N/A	
DATE 05/08/03	FINISH N/A	



- NOTES:**
1. ALL ROPES AVAILABLE IN TRADITIONAL MANILLA MATERIAL OR SOFT FEEL POLYESTER.
 2. ALL ROPES AVAILABLE PLAIN (AS SHOWN) OR WITH RUBBER CLIMBING BALLS.
 3. ROPES FURNISHED IN TWO STANDARD LENGTHS, 20 FT. AND 24FT. FOR ADDITIONAL HEIGHTS, ADJUST WITH CHAIN OR CONSULT SALES DEPARTMENT FOR CUSTOM LENGTH.





MODEL 103

CLIMBING ROPES

Climbing ropes shall be made of either 1-1/2" [38.1 mm] diameter traditional manila or 1-1/2" [38.1 mm] soft-feel polyester materials and include a specially designed eye fitting ready for easy installation to your ceiling attachment. Bottom end of rope to have (specify one of the following) polyboot end, whipped end or turk's head knot with a leather seat. Ropes can also be provided with beginner's knots or rubber climbing balls spaced every 18" [457.2 mm].

Specify if special attachment hardware or fittings are required.

MODEL 102

CLIMBING ROPE TAMBOURINE

Tambourine shall be 24" [609.6 mm] in diameter and shall be constructed of 1/2" [12.7 mm] thick plywood. Tambourine shall come complete with necessary fittings for installation.